



## KP-SERIES PUMP



## Applications

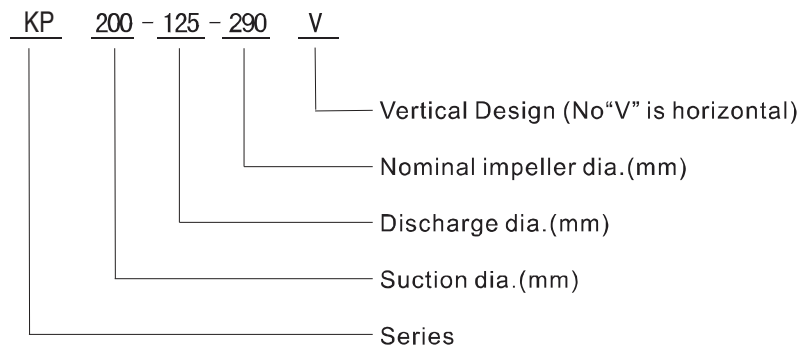
Clean water or medium similar to water in Physical and chemical properties

- |                     |   |                  |                   |
|---------------------|---|------------------|-------------------|
| Water supply        | Drainage                                    | Irrigation       | Power station     |
| Hydropower station  | Fire-fighting                               | Air-conditioning | Building Industry |
| Marine applications | All kinds of water for industrial processes |                  |                   |

## Specification

- |                                |   |
|--------------------------------|---|
| Capacity                       | Q :50~20000m <sup>3</sup> /h                  |
| Head                           | H : 10~230m                                   |
| Suction Dia                    | DN: 100~1400mm                                |
| Discharge Dia                  | DN: 80~1200mm                                 |
| Operating Pressure             | P : ≤5MPa                                     |
| Operating Temperature          | t : -15°C~+ 200°C(above 80°C,pls contact CNP) |
| Abrasive medium concentration: | ≤4%   |

## Designation



## Standard Materials

Medium Name	Clear water	Water with mud and sand/ Oxide scale water /Sewage/ Saline water	Sea water	Hot water	Petrochemical liquids
Casing	Cast Iron	Nickel chromium cast iron /Wear resistant cast iron /Cast steel + Wear-resistant coating	Duplex stainless steel	Ductile CI / Cast steel / Stainless steel	According to API610 I-1,I-2, S-5,S-8, C-6,A-7, A-8,D-1, D-2
Impeller	CI/Bronze/ Stainless steel	Ductile CI /SS420/ Stainless steel	Duplex stainless steel	SS420/ Stainless steel	
Bearing housing	Cast Iron	Cast Iron	Cast Iron	Cast Iron	
Shaft	SS420	SS420	Duplex stainless steel	SS420/ Stainless steel	
Wear ring	Cast Iron	Ductile CI/SS420	Bronze / Duplex stainless steel with hardening treatment	Ductile CI /Cast steel	
Shaft sleeve	SS420	SS420	Duplex stainless steel	SS420	
Shaft seal	Packing/ Mechanical seal	Packing/ Mechanical seal	Mechanical seal	Mechanical seal	
Flushing Pipeline	Q235-A	Q235-A	316L	Q235-A/stainless steel	

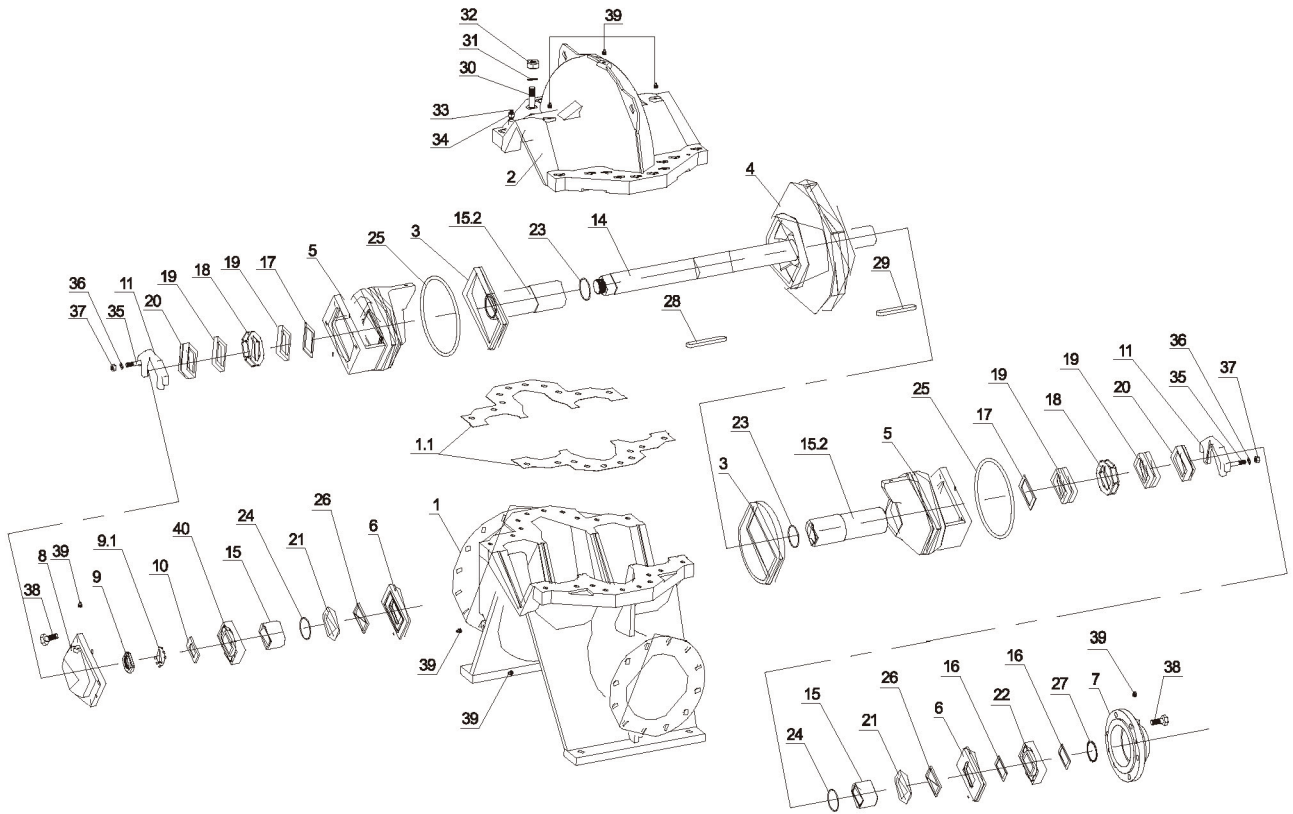
Note: The materials of pump parts are chosen according to the pressure rating, application, medium, operating temperature and customer requirements etc.



**KP**  
series

End Suction Centrifugal Pump

KP Series Explode View & List of Parts



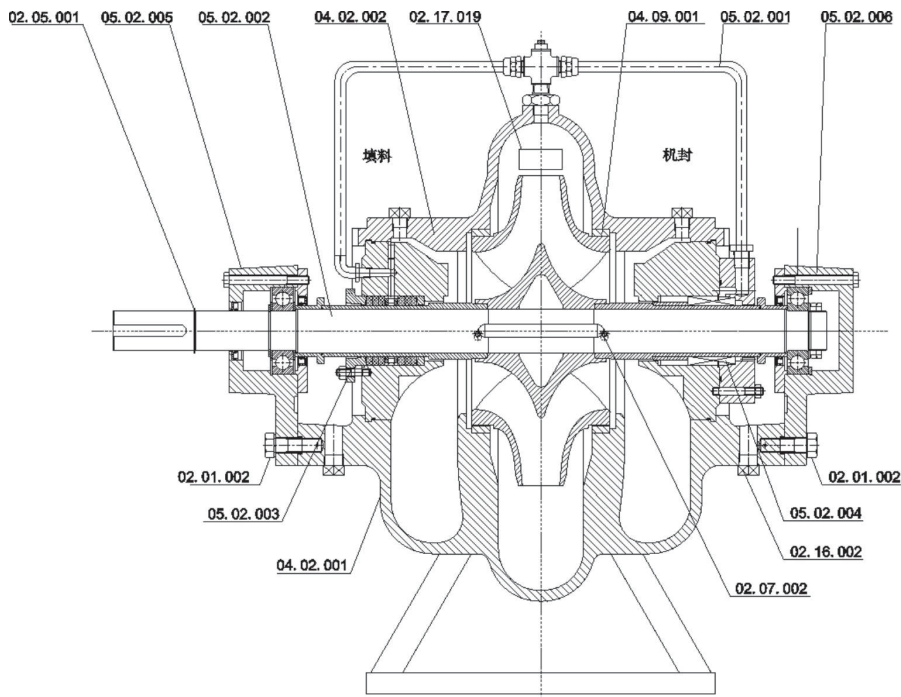
Code	Part Name
01	Casing-Bottom
01.1	Casing Gasket
02	Casing-Top
3	Wear Ring
04	Impeller
05	Seal Housing
06	Bearing Cover
07	Bearing Housing-Driver End
08	Bearing Housing-Non-Driver End
09	Screw Nut
09.1	Lock Washer for Nut
10	Bearing Slinger
11	Seal Plate
14	Shaft

Code	Part Name
15	Shaft Sleeve-Short
15.2	Packing Shaft Sleeve
16	Bearing Slinger Plate
17	Packing Seal Pate
18	Lantern Ring
19	Gland
20	Packing Cover
21	Slinger
22	Bearing
23	O-ring
24	O-ring
25	O-rin
26	Felting
27	External Circlips

Code	Part Name
28	Key
29	Key
30	Screw Bolt
32	Spring Washer
32	Screw Nut
33	Pin
34	Screw Nut
35	Screw Bolt
36	Flat Gasket
37	Screw Nut
38	Screw Blot
39	Plug
4	Bearing

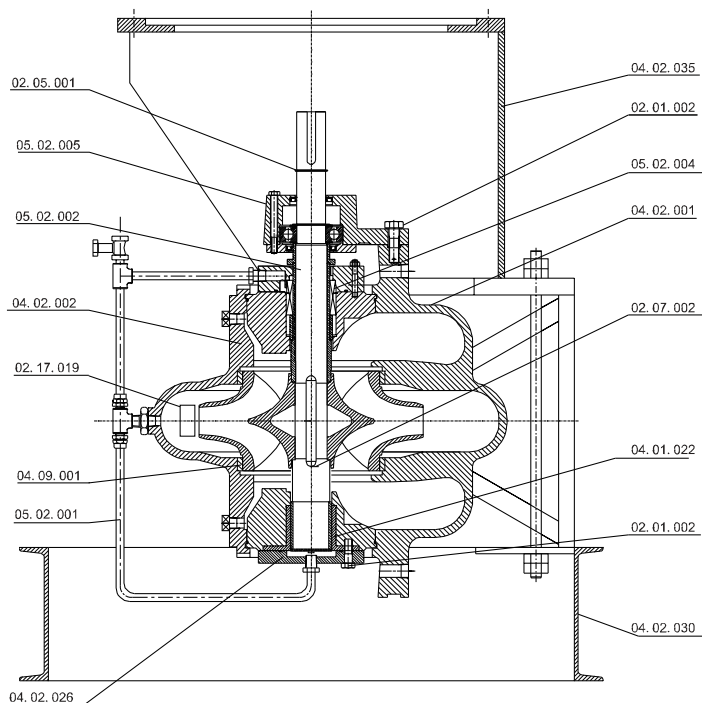
## Sectional View—KP

### Horizontal Installation



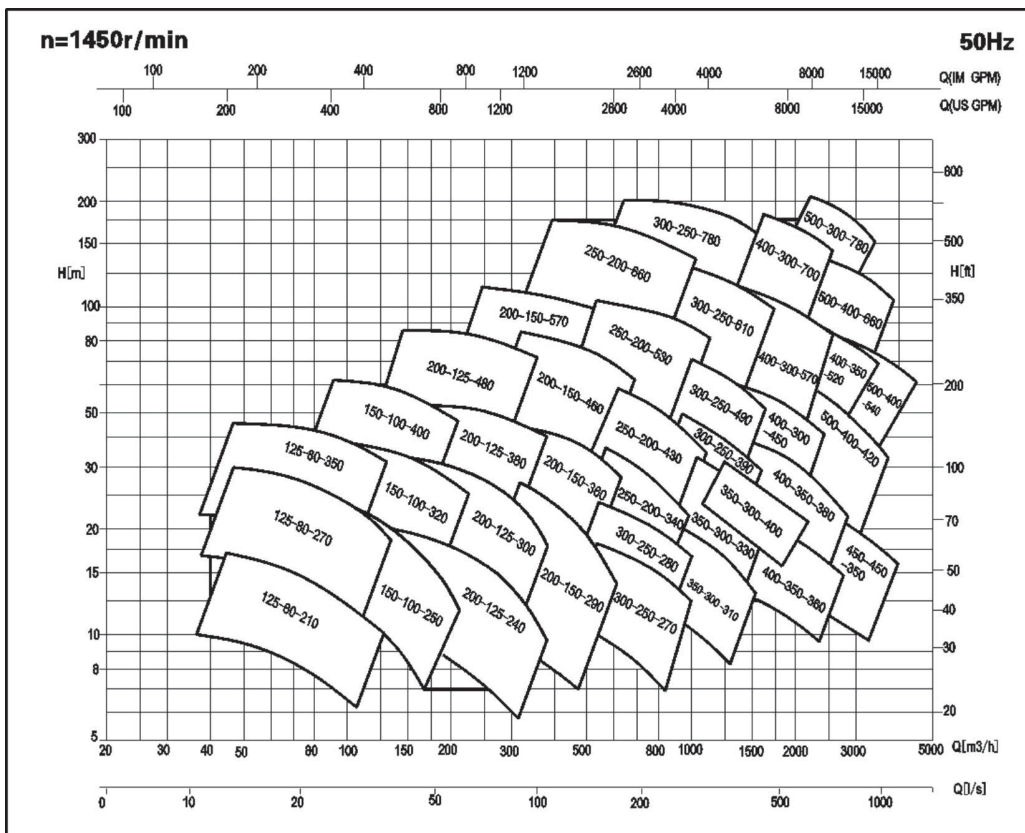
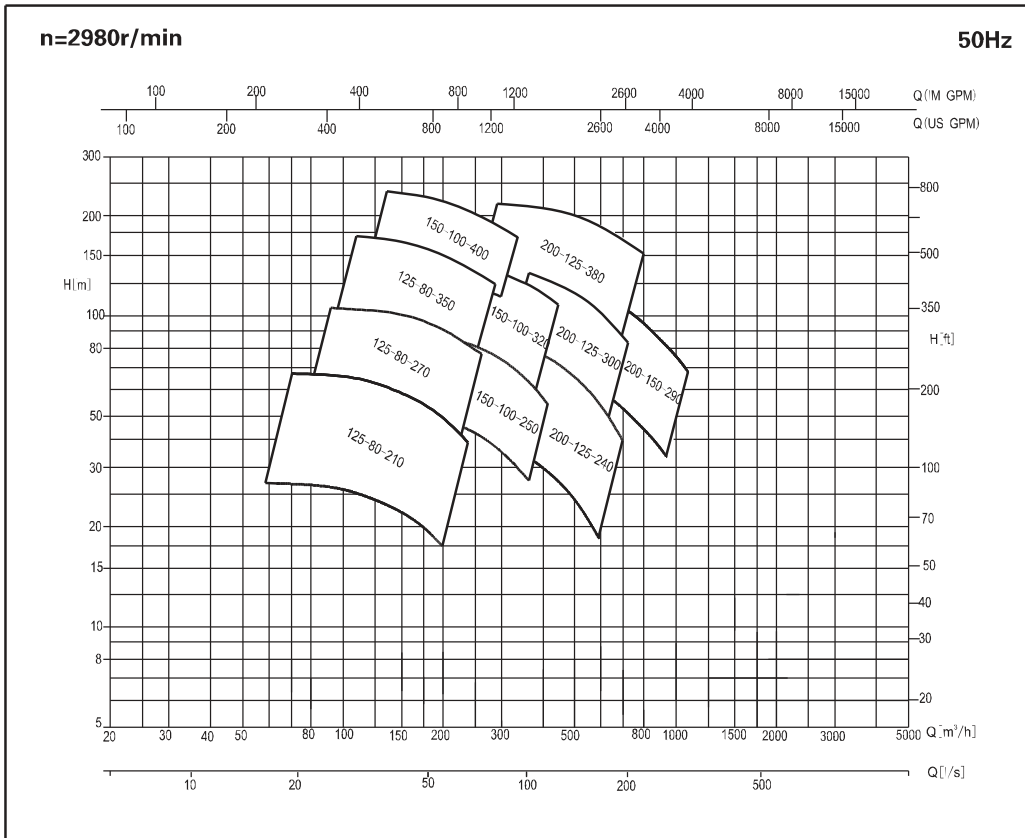
Part No.	Part Name
02.05.001	Shaft Circlip
05.02.005	Bearing assembly (DE)
05.02.002	Rotor assembly
04.02.002	Upper casing
02.17.019	Nameplate
04.09.001	Casing wear ring
05.02.001	Flushing water piping
05.02.006	Bearing assembly (NDE)
02.01.002	Bolt
05.02.003	Packing seal assembly
04.02.001	Lower casing
05.02.004	Mechanical seal assembly
02.16.002	Plug
02.07.002	Wear ring dowel pin

### Vertical Installation



Part No.	Part Name
02.05.001	Shaft Circlip
05.02.005	Bearing assembly (DE)
05.02.002	Rotor assembly
04.02.002	Upper casing
02.17.019	Nameplate
04.09.001	Casing wear ring
05.02.001	Flushing water piping
04.02.026	Cap
04.02.035	Motor riser
02.01.002	Bolt
05.02.004	Mechanical seal assembly
04.02.001	Lower casing
02.07.002	Wear ring dowel pin
04.01.022	Bearing bush
04.02.030	Foot

**Performance Range**

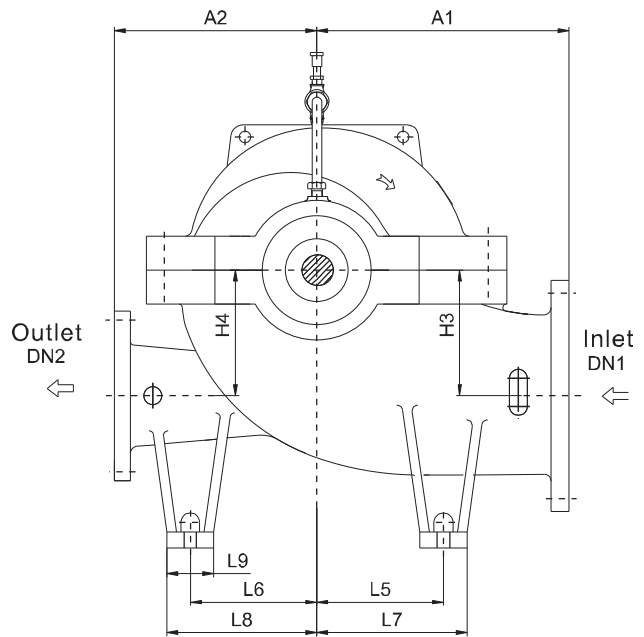
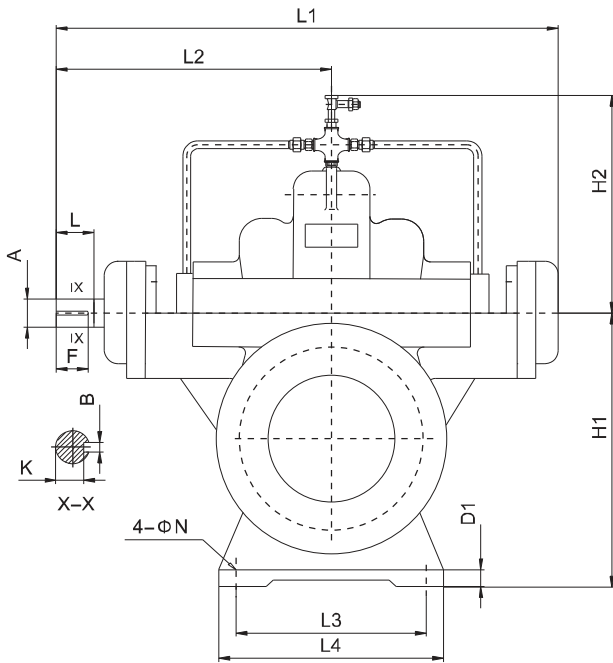




## Dimensions

### Bare Shaft Pump Dimensions

Direction of Rotation: Clockwise



Dimensions—Bare Shaft Pump (1/2)

Unit: mm, unless other wise stated

Model	A1	A2	H1	H2	H3	H4	L1	L2	L3	L4	L5	L6	L7	L8	L9	D1	N	A	L	B	K	F
KP125-80-210	300	300	315	270	150	150	788.9	440.5	270	320	170	170	205	205	70	30	18	35	81.5	10	30	75
KP125-80-270	300	300	315	269	150	150	788.9	440.5	270	320	170	170	205	205	70	30	18	35	81.5	10	30	75
KP125-80-350	330	330	315	333	140	140	788.9	440.5	270	320	170	170	210	210	80	30	18	35	81.5	10	30	75
KP150-100-250	330	330	355	328	170	170	788.9	440.5	270	320	200	200	240	240	80	30	18	35	81.5	10	30	75
KP150-100-320	330	330	355	342	170	170	788.9	440.5	270	320	200	200	240	240	80	30	18	35	81.5	10	30	75
KP150-100-400	370	370	355	260	170	170	788.9	440.5	270	320	200	200	245	245	90	30	18	35	81.5	10	30	75
KP150-100-400G	370	370	355	260	170	170	788.9	440.5	270	320	200	200	245	245	90	30	18	40	105	12	35	100
KP200-125-240	370	370	400	300	200	200	871	500	380	430	200	200	240	240	80	22	25	45	111.5	14	39.5	105
KP200-125-300	370	370	400	325	200	200	871	500	380	430	225	225	265	265	80	22	25	45	111.5	14	39.5	105
KP200-125-380	395	370	400	350	200	200	871	500	340	390	225	225	265	265	80	30	25	45	111.5	14	39.5	105
KP200-125-480	450	450	400	389	200	200	871	500	340	390	280	280	320	320	80	30	25	45	111.5	14	39.5	105
KP200-150-290	400	400	400	340	200	200	871	500	380	430	225	225	265	265	80	30	25	45	111.5	14	39.5	105
KP200-150-360	400	400	400	380	200	200	871	500	380	430	225	225	265	265	80	30	25	45	111.5	14	39.5	105
KP200-150-460	450	450	400	390	200	200	1006.1	569.3	430	480	280	280	320	320	80	30	25	55	112.7	16	49	100
KP200-150-570	600	500	500	460	300	300	1006.1	569.3	430	480	350	350	400	400	100	30	25	55	112.7	16	49	100
KP250-200-340	450	450	500	368	240	240	1006.1	569.3	430	480	280	280	320	320	80	25	25	55	112.7	16	49	100
KP250-200-430	500	500	500	400	240	240	1006.1	569.3	430	480	280	280	325	325	90	30	25	55	112.7	16	49	100
KP250-200-530	600	600	560	470	300	300	1110.8	637.3	430	480	350	350	400	400	100	30	25	65	143.2	18	58	135
KP250-200-660	650	550	600	525	350	350	1110.8	637.3	440	520	350	350	400	400	100	30	25	65	143.2	18	58	135
KP300-250-270	500	450	600	404	300	300	1006.1	569.3	430	480	300	270	340	310	80	30	25	55	112.7	16	49	100
KP300-250-280	500	450	600	404	300	300	1006.1	569.3	430	480	300	270	340	310	80	30	25	55	112.7	16	49	100
KP300-250-390	500	500	600	417	300	300	1110.8	637.3	430	480	350	350	400	400	100	42	25	65	143.2	18	58	135
KP300-250-490	550	550	600	583	300	300	1316.5	737.5	520	600	350	350	400	400	100	35	25	75	143.5	20	67.5	135

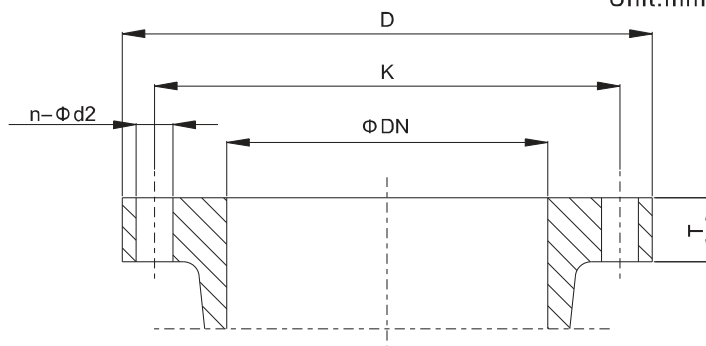
Dimensions—Bare Shaft Pump (2/2)

Unit: mm, unless other wise stated

Model	A1	A2	H1	H2	H3	H4	L1	L2	L3	L4	L5	L6	L7	L8	L9	D1	N	A	L	B	K	F
KP300-250-610	650	550	630	640	350	350	1316.5	737.5	520	600	350	350	400	400	100	42	25	75	143.5	20	67.5	135
KP300-250-780	700	600	750	600	400	400	1533	870	600	700	350	350	425	425	150	42	25	85	143.5	22	76	165
KP350-300-310	600	520	630	465	300	300	1110.8	637.3	480	560	350	350	415	365	130	35	25	65	143.2	18	58	135
KP350-300-330	600	520	630	465	300	300	1110.8	637.3	480	560	350	350	415	365	130	35	25	65	143.2	18	58	135
KP350-300-400	600	560	630	450	320	320	1243	696	480	560	350	350	415	415	130	35	25	65	143.2	18	67.5	135
KP400-300-450	650	550	700	590	350	350	1316.5	737.5	520	600	350	350	400	400	100	40	25	75	143.5	20	76	135
KP400-300-570	750	650	710	530	350	350	1527	870	520	600	475	475	525	525	100	40	25	85	172.5	22	76	165
KP400-300-700	700	650	750	530	400	400	1527	870	600	700	425	425	485	485	120	40	25	85	172.5	22	76	165
KP400-350-360	670	570	670	513	350	350	1316.5	737.5	630	710	330	330	380	380	100	35	25	75	143.5	20	67.5	135
KP400-350-380	670	570	670	513	350	350	1316.5	737.5	630	710	330	330	380	380	100	35	25	75	143.5	20	67.5	135
KP400-350-520	700	650	750	535	400	400	1527	870	520	600	475	475	525	525	100	35	25	85	172.5	22	76	165
KP400-450-350	700	550	700	520	370	370	1308.5	737.5	700	800	330	330	380	380	100	35	25	75	143.5	20	67.5	135
KP500-300-920	900	900	850	615	400	400	1909	1088	780	940	500	500	620	620	240	40	42	115	210	32	104	180
KP500-300-780	800	750	800	535	400	400	1900	1055	580	740	450	450	570	570	240	45	25	115	210	30	104	180
KP500-400-400	765	600	785	537	420	420	1438.5	821.5	560	640	400	400	460	460	120	35	30	75	143.5	20	67.5	135
KP500-400-420	765	600	785	537	420	420	1438.5	821.5	560	640	400	400	460	460	120	35	30	75	143.5	20	67.5	135
KP500-400-540	700	700	820	600	420	420	1773	1009	780	940	400	400	520	520	240	40	35	100	210	28	90	180
KP500-400-590	900	750	850	700	470	470	1527	870	780	940	400	400	520	520	240	40	35	85	172.5	22	76	165
KP500-400-660	850	750	750	641	450	450	1773	1000	780	940	500	500	620	620	240	40	35	100	210	28	90	180
KP500-400-675	850	750	850	641	450	450	1527	870	780	940	500	500	620	620	240	40	35	85	172.5	22	76	165
KP600-400-740	990	800	1000	697	530	530	1773	1009	780	940	560	560	680	580	240	40	35	100	210	28	90	180
KP600-400-850	1030	880	1000	600	500	500	2009	1138	880	1060	600	600	730	730	260	50	42	115	210	32	104	180
KP600-450-640	1000	800	970	690	510	510	1773	1009	780	940	525	525	650	650	250	50	42	100	210	28	90	180
KP600-500-470	1020	740	970	737	550	525	1790	984	780	940	360	360	480	480	240	40	35	95	170	25	71	130
KP600-500-520	1020	740	970	737	550	525	1790	984	780	940	360	360	480	480	240	40	35	95	170	25	71	130
KP600-500-550	1020	740	970	970	550	525	1790	984	780	940	360	360	480	480	240	40	35	80	142	22	71	130
KP600-500-580	1020	740	970	737	550	525	1790	984	780	940	360	360	480	480	240	40	35	80	142	22	71	130
KP700-500-670	1050	950	1035	725	550	550	1773	1009	780	940	625	625	750	650	250	50	42	100	210	28	90	180
KP700-500-940	1050	950	1150	695	650	650	2308	1225	980	1100	700	700	810	710	220	50	42	130	250	32	119	245
KP700-600-600	1050	850	1100	800	610	610	1935	1090	780	940	725	725	850	700	250	50	42	100	210	28	90	180
KP700-600-680	1050	850	1100	800	610	610	1935	1090	780	940	725	725	850	700	250	50	42	100	210	28	90	180
KP700-600-740	1150	1100	1070	725	570	570	1909	1088	880	1060	630	630	760	760	260	50	42	115	210	32	104	180
KP700-700-500	1160	800	1000	640	530	530	1730	960	940	1100	625	625	750	550	2550	50	42	85	170	22	76	165
KP800-700-750	1000	1250	1250	870	710	680	2310	1278	1000	1250	725	725	875	875	300	60	42	120	210	32	109	200
KP800-700-910	1315	1150	1250	890	700	700	2318	1278	1000	1200	725	725	875	875	300	50	42	130	250	32	119	245
KP1000-800-940	1450	1200	1500	1060	810	810	2700	1460	1250	1400	850	850	1000	1000	300	60	50	130	250	32	119	245

Standard Flange Dimensions

Unit: mm, unless other wise stated



Note: Other flange designs are available on request



**KP**  
series

## Installation Dimension

### Dimension-Flange

Model	ISO 7025/2 DIN2501	Suction flange						Discharge flange					
		DN	D(mm)	T(mm)	K(mm)	d2(mm)	n	DN	D(mm)	T(mm)	K(mm)	d2(mm)	n
KP125-80-210 KP125-80-270 KP125-80-350	PN16	125	250	26	210	19	8	80	200	22	160	19	8
KP150-100-250 KP150-100-320 KP150-100-400	PN16	150	285	26	240	23	8	100	220	24	180	19	8
KP150-100-400G	PN40	150	300	26	250	28	8	100	235	19	190	23	8
KP200-125-240 KP200-125-300 KP200-125-380 KP200-125-480	PN16	200	340	30	295	23	12	125	250	26	210	19	8
KP200-150-290 KP200-150-360 KP200-150-460	PN16	200	340	30	295	23	12	150	285	26	240	23	8
KP200-150-570	PN25	200	360	34	310	28	12	150	300	34	250	28	8
KP250-200-340 KP250-200-430 KP250-200-530	PN16	250	405	32	355	28	12	200	340	30	295	23	12
KP250-200-660	PN25	250	425	38	370	31	12	200	360	34	310	28	12
KP300-250-270 KP300-250-230 KP300-250-390 KP300-250-490 KP300-250-610	PN16	300	460	32	410	28	12	250	405	32	355	28	12
KP250-200-780	PN40	300	515	50	450	34	16	250	450	46	385	34	12
KP350-300-310 KP350-300-330 KP350-300-400	PN16	350	520	36	470	28	16	300	460	32	410	28	12
KP400-300-450 KP400-300-570	PN16	400	580	36	470	31	16	300	460	32	410	28	12
KP400-300-700	PN16	400	620	38	525	37	16	300	485	40	430	31	16
KP400-350-360 KP400-350-380 KP400-350-520	PN16	400	580	38	525	31	16	350	520	36	470	28	16
KP450-450-350	PN10	450	615	35	565	28	20	450	615	35	565	28	20
KP500-400-400 KP500-400-420	PN10	500	670	34	620	28	20	400	565	32	515	28	16
KP500-300-780	PN40	500	755	64	670	42	20	300	515	50	450	33	8
KP500-300-920	PN25	500	730	56	660	36	20	300	485	38	430	30	16
KP500-400-590 KP500-400-675	PN10	500	670	34	620	28	20	400	565	32	515	28	16
KP500-400-500 KP500-400-540	PN16	500	715	42	650	34	20	400	580	38	525	31	16
KP500-400-660	PN25	500	730	52	660	37	20	400	620	48	550	37	16
KP600-400-660	PN16	125	250	26	210	19	8	80	200	22	160	19	8
KP600-500-470 KP600-500-520 KP600-500-550 KP600-500-580	PN10	600	780	36	725	31	20	500	670	34	620	28	20
KP600-400-740	PN16	600	840	48	770	37	20	400	580	38	525	31	16
KP700-500-670	PN10	700	895	40	840	31	24	500	670	34	620	28	20
KP700-500-940	PN25	700	960	60	875	43	24	500	730	52	660	37	20
KP700-600-600 KP700-600-680	PN10	700	895	40	840	31	24	600	780	36	725	31	20
KP700-600-740	PN16	700	895	40	840	31	24	600	780	36	725	31	20
KP700-700-500	PN10	700	910	54	840	36	24	600	840	48	770	37	20
KP800-700-750	PN10	800	1015	44	950	31	24	700	895	40	840	31	24
KP800-700-910	PN16	800	1015	44	950	34	24	700	895	40	840	31	24
KP1000-800-940	PN10	1000	1230	50	1160	36	28	800	1015	44	950	34	24

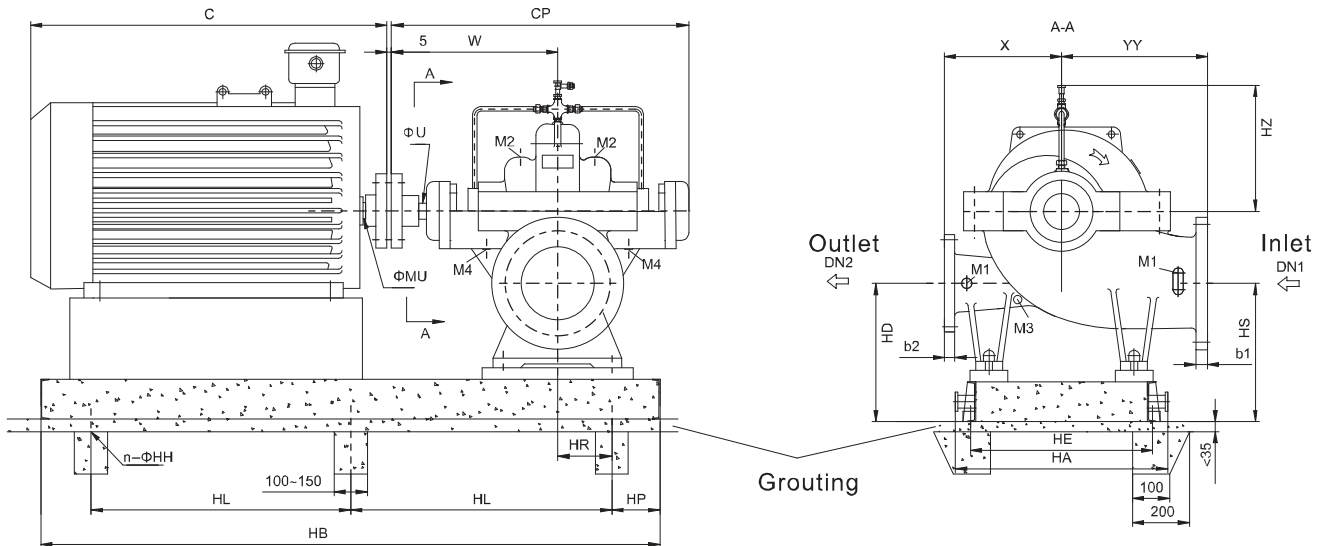
Note: If require flange which is in accordance with BS4504, ANSI B16.1 or other standards, pls specify.



## Horizontal Pump with Motor Dimensions (Standard)

Unit: mm, unless other wise stated

Direction of Rotation:Clockwise



After alignment fill baseplate with non-shrinking concrete Position of the terminal box is in accordance with the motor standard

Connect pipes without stress

Connections

M1:Pressure gauge G1/2 M2:Vent G1/2 M3:Drainage G1/2 M4:Leakage liquid drain G3/4

### Dimensions—Horizontal Arrangement (1/5)

Unit: mm, unless other wise stated

Model	Speed (r/min)	Power (KW)	Motor Size	Pump					Motor		Baseplate					Weight (Kg)								
				CP	U	W	YY	X	HZ	C	MU	HB	HP	HL	HD/HS	HA	HE	n	HH	HR	Pump	Motor	Baseplate	Total
KP125-80-210	1480	1.5	90L	788.9	35	440.5	300	300	270	340	24	930	120	340	305	570	470	6	20	80	180	27	105	312
		3	100L							380	28	960	120	360	305	570	470	6	20	80	180	33	105	318
		4	112M							400	28	970	120	360	305	570	470	6	20	80	180	45	110	335
		5.5	132S							475	38	1020	120	390	305	570	470	6	20	80	180	61	110	351
	2980	15	160M							605	42	1140	120	450	305	570	470	6	20	80	180	106	120	406
		18.5	160L							605	42	1180	120	470	305	570	470	6	20	80	180	125	125	430
		22	180M							670	48	1190	120	470	305	570	470	6	20	80	180	152	120	452
		37	200L							775	55	1270	120	510	305	570	470	6	20	80	180	245	125	550
45	225M	815	55	1290	120	520	305	570	470	6	20	80	180	307	125	612								
KP125-80-270	1480	3	100L	788.9	35	440.5	300	300	269	380	28	960	120	360	305	570	470	6	20	80	185	33	100	317
		4	112M							400	28	970	120	360	305	570	470	6	20	80	185	45	102	331
		5.5	132S							475	38	1020	120	390	305	570	470	6	20	80	185	61	104	349
		7.5	132M							515	38	1060	120	410	305	570	470	6	20	80	185	73	108	365
		11	160M							605	42	1140	120	450	305	570	470	6	20	80	185	103	111	398
		15	160L							650	42	1180	120	470	305	570	470	6	20	80	185	130	116	430
	2980	22	180M							670	48	1190	120	470	305	570	470	6	20	80	185	152	113	449
		37	200L							775	55	1270	120	510	305	570	470	6	20	80	185	245	117	546
		45	225M							815	55	1290	120	520	305	570	470	6	20	80	185	307	115	606
		55	250M							930	60	1390	120	570	305	600	500	6	20	80	185	378	120	682
		75	280S							1000	65	1460	120	610	305	670	540	6	20	80	185	550	129	863
		90	280M							1050	65	1510	120	630	305	670	540	6	20	80	185	570	133	887

Note: Dimensions and weight deviations subject to selected motor manufacturer are to be considered.



**KP**  
series

Installation Dimension

Horizontal Arrangement Dimensions (2/5)

Unit: mm, unless other wise stated

Model	Speed (r/min)	Power (KW)	Motor Size	Pump						Motor		Baseplate										Weight (Kg)										
				CP	U	W	YY	X	HZ	C	MU	HB	HP	HL	HD/HS	HA	HE	n	HH	HR	Pump	Motor	Baseplate	Total								
KP125-80-350	1480	5.5	132S	788.9	35	440.5	330	330	333	475	38	1020	120	390	315	570	470	6	20	80	205	61	106	373								
		7.5	132M							515	38	1060	120	410	315	570	470	6	20	80	205	73	109	388								
		11	160M							605	42	1140	120	450	315	570	470	6	20	80	205	103	112	421								
		15	160L							650	42	1180	120	470	315	570	470	6	20	80	205	130	117	453								
		18.5	180M							670	48	1190	120	470	315	570	470	6	20	80	205	165	114	485								
		22	180L							710	48	1240	120	500	315	570	470	6	20	80	205	180	117	503								
KP150-100-250	1480	3	100L	788.9	35	440.5	330	330	328	380	28	960	120	360	325	600	500	6	20	80	220	33	106	357								
		4	112M							400	28	970	120	360	325	600	500	6	20	80	220	45	108	371								
		5.5	132S							475	38	1020	120	390	325	600	500	6	20	80	220	61	111	390								
		7.5	132M							515	38	1060	120	410	325	600	500	6	20	80	220	73	115	406								
		11	160M							605	42	1140	120	450	325	600	500	6	20	80	220	103	120	441								
		15	160L							650	42	1180	120	470	325	600	500	6	20	80	220	130	125	473								
	2980	22	180M							670	48	1190	120	470	325	600	500	6	20	80	220	152	122	492								
		37	200L							775	55	1270	120	510	325	600	500	6	20	80	220	245	127	590								
		45	225M							815	55	1290	120	520	325	600	500	6	20	80	220	307	126	651								
		55	250M							930	60	1390	120	570	325	600	500	6	20	80	220	378	132	728								
		75	280S							1000	65	1460	120	610	325	670	540	6	20	80	220	550	131	899								
		90	280M							1050	65	1510	120	630	325	670	540	6	20	80	220	570	136	924								
		110	315S							1240	65	1550	120	650	325	790	690	6	20	80	220	740	156	1114								
		132	315M							1310	65	1630	120	690	325	790	690	6	20	80	235	855	166	1251								
KP150-100-320	1480	7.5	132M	788.9	35	440.5	330	330	342	515	38	1060	120	410	325	600	500	6	20	80	235	73	115	418								
		11	160M							605	42	1140	120	450	325	600	500	6	20	80	235	103	120	453								
		15	160L							650	42	1180	120	470	325	600	500	6	20	80	235	130	125	485								
		18.5	180M							670	48	1190	120	470	325	600	500	6	20	80	235	165	122	517								
		22	180L							710	48	1270	120	510	325	600	500	6	20	80	235	180	126	536								
		30	200L							775	55	1290	120	520	325	600	500	6	20	80	235	238	127	595								
	2980	55	250M							930	60	1390	120	570	325	600	500	6	20	80	235	378	132	740								
		75	280S							1000	65	1460	120	610	325	670	540	6	20	80	235	550	131	911								
		90	280M							1050	65	1510	120	630	325	670	540	6	20	80	235	570	136	936								
		110	315S							1240	65	1550	120	650	325	790	690	6	20	80	235	740	155	1125								
		132	315M							1310	65	1630	120	690	325	790	690	6	20	80	235	855	166	1251								
		200	315L							1310	65	1650	120	700	325	790	690	6	20	80	235	970	166	1366								
		KP150-100-400	1480							11	160M	788.9	35	440.5	370	370	260	605	42	1140	120	450	325	600	500	6	20	80	245	103	121	462
										15	160L							650	42	1180	120	470	325	600	500	6	20	80	245	130	126	494
18.5	180M			670	48	1190	120	470	325	600	500							6	20	80	245	165	123	526								
195	180L			710	48	1240	120	500	325	600	500							6	20	80	245	180	127	545								
30	200L			775	55	1270	120	510	325	600	500							6	20	80	245	238	128	604								
37	225S			820	60	1300	120	530	325	600	500							6	20	80	245	298	125	661								
45	225M			847	60	1320	120	520	325	600	500							6	20	80	245	322	127	687								
55	250M			930	65	1390	120	570	325	600	500							6	20	80	245	410	133	781								
2980	75		280S	1000	65	1460	120	610	325	670	540							6	20	80	245	550	131	911								
	90		280M	1050	65	1510	120	630	325	670	540							6	20	80	235	570	136	936								
	110		315S	1240	65	1550	120	650	325	790	690							6	20	80	235	740	155	1125								
	132		315M	1310	65	1630	120	690	325	790	690							6	20	80	235	855	166	1251								
	200		315L	1310	65	1650	120	700	325	790	690							6	20	80	235	970	166	1366								
	200		315L	1310	65	1650	120	700	325	790	690							6	20	80	235	970	166	1366								
KP200-125-240	1480	5.5	132S	871	45	500	370	370	300	475	38	1140	150	420	360	600	500	6	20	110	295	61	128	483								
		7.5	132M							515	38	1180	150	440	360	600	500	6	20	110	295	73	132	499								
		11	160M							605	42	1260	150	480	360	600	500	6	20	110	295	103	138	535								
		15	160L							650	42	1300	150	500	360	600	500	6	20	110	295	130	144	568								
		18.5	180M							670	48	1310	150	500	360	600	500	6	20	110	295	165	141	600								
		22	180L							710	48	1360	150	530	360	600	500	6	20	110	295	180	146	620								
	2980	45	225M							815	55	1410	150	550	360	600	500	6	20	110	295	307	149	750								
		55	250M							930	60	1510	150	600	360	600	500	6	20	110	295	378	156	828								
		75	280S							1000	65	1580	150	640	360	670	540	6	20	110	295	550	163	1007								
		90	280M							1050	65	1630	150	660	360	670	540	6	20	110	295	570	169	1033								
		110	315S							1240	65	1660	150	680	360	790	690	6	20	110	295	740	185	1219								
		132	315M							1310	65	1750	150	720	360	790	690	6	20	110	295	855	197	1346								
		KP200-125-300	1480							7.5	132M	871	45	500	370	370	325	515	38	1180	150	440	360	680	580	6	20	110	310	73	135	520
										11	160M							605	42	1260	150	480	360	680	580	6	20	110	310	103	142	557
15	160L			650	42	1300	150	500	360	680	580							6	20	110	310	130	147	589								
18.5	180M			670	48	1310	150	500	360	680	580							6	20	110	310	165	145	622								
22	180L			710	48	1360	150	530	360	680	580							6	20	110	310	180	150	642								
30	200L			775	55	1390	150	540	360	680	580							6	20	110	310	238	150	700								
2980	37		225S	820	60	1420	150	560	360	680	580							6	20	110	310	298	147	757								
	55		250M	930	60	1510	150	600	360	680	580							6	20	110	310	378	163	853								
	75		280S	1000	65	1580	150	640	360	680	580							6	20	110	310	550	163	1025								
	90		280M	1050	65	1630	150	660	360	680	580							6	20	110	310	570	169	1051								
	110		315S	1240	65	1660	150	680	360	790	690							6	20	110	310	740	185	1237								
	132		315M	1310	65	1750	150	720	360	790	690							6	20	110	310	855	197	1364								
	200		315L	1310	65	1770	150	730	360	790	690							6	20	110	310											

Horizontal Arrangement Dimensions (3/5)

Unit: mm, unless other wise stated

Model	Speed (r/min)	Power (KW)	Motor Size	Pump						Motor		Baseplate										Weight (Kg)			
				CP	U	W	YY	X	HZ	C	MU	HB	HP	HL	HD/HS	HA	HE	n	HH	HR	Pump	Motor	Baseplate	Total	
KP200-125-380	1480	15	160L	871	45	500	395	370	350	650	42	1290	150	490	360	670	540	6	20	95	350	130	152	632	
		18.5	180M							670	48	1290	150	490	360	670	540	6	20	95	350	165	149	664	
		22	180L							710	48	1340	150	520	360	670	540	6	20	95	350	180	154	684	
		30	200L							775	55	1370	150	530	360	670	540	6	20	95	350	238	155	743	
		37	225S							820	60	1400	150	550	360	670	540	6	20	95	350	298	152	800	
		45	225M							845	60	1430	150	560	360	670	540	6	20	95	350	322	154	826	
		55	250M							930	65	1500	150	600	360	670	540	6	20	95	350	410	162	922	
		75	280S							1000	75	1560	150	630	360	670	540	6	20	95	350	555	169	1074	
KP200-125-480	1480	30	200L	871	45	500	450	450	389	775	55	1370	150	530	360	790	690	6	20	95	390	238	161	789	
		37	225S							820	60	1400	150	550	360	790	690	6	20	95	390	298	158	846	
		45	225M							845	60	1430	150	560	360	790	690	6	20	95	390	322	160	872	
		55	250M							930	65	1500	150	600	360	790	690	6	20	95	390	410	168	968	
		75	280S							1000	75	1560	150	630	360	790	690	6	20	95	390	555	176	1121	
		90	280M							1050	75	1620	150	660	360	790	690	6	20	95	390	610	182	1182	
		110	315S							1270	80	1680	150	690	360	790	690	6	20	95	390	750	192	1332	
		132	315M							1340	80	1730	150	710	360	790	690	6	20	95	390	875	204	1469	
KP200-150-290	1480	11	160M	871	45	500	400	400	340	605	42	1260	150	480	360	680	580	6	20	110	330	103	150	583	
		15	160L							650	42	1300	150	500	360	680	580	6	20	110	330	130	150	610	
		18.5	180M							670	48	1310	150	500	360	680	580	6	20	110	330	165	160	655	
		22	180L							710	48	1360	150	530	360	680	580	6	20	110	330	180	160	670	
		30	200L							775	55	1390	150	540	360	680	580	6	20	110	330	238	170	738	
		37	225S							820	60	1420	150	560	360	680	580	6	20	110	330	298	170	798	
		45	225M							930	60	1440	150	570	360	680	580	6	20	110	330	322	170	822	
										1000	75	1580	150	640	360	670	540	6	20	110	365	555	185	1090	
KP200-150-360	1480	18.5	180M	871	45	500	400	400	380	670	48	1310	150	500	360	670	540	6	20	110	365	165	160	675	
		22	180L							710	48	1360	150	530	360	670	540	6	20	110	365	180	160	690	
		30	200L							775	55	1390	150	540	360	670	540	6	20	110	365	238	170	758	
		37	225S							820	60	1420	150	560	360	670	540	6	20	110	365	298	170	818	
		45	225M							930	60	1440	150	570	360	670	540	6	20	110	365	322	170	842	
		55	250M							930	65	1510	150	600	360	670	540	6	20	110	365	410	175	935	
		75	280S							1000	75	1580	150	640	360	670	540	6	20	110	365	555	185	1090	
										1000	75	1580	150	640	360	670	540	6	20	110	365	555	185	1090	
KP200-150-460	1480	30	200L	1006.1	55	569.3	450	450	390	775	55	1490	150	590	360	770	650	6	25	140	460	238	220	918	
		37	225S							820	60	1520	150	610	360	770	650	6	25	140	460	298	230	988	
		45	225M							930	60	1540	150	620	360	770	650	6	25	140	460	322	230	1012	
		55	250M							930	65	1610	150	650	360	770	650	6	25	140	460	410	235	1105	
		75	280S							1000	75	1680	150	690	360	770	650	6	25	140	460	555	250	1265	
		90	280M							1050	75	1730	150	710	360	770	650	6	25	140	460	610	255	1325	
		110	315S							1270	80	1790	150	740	360	770	650	6	25	140	460	750	280	1490	
		132	315M							1340	80	1850	150	770	360	770	650	6	25	140	460	875	280	1615	
		200	315L							1340	80	1900	150	800	360	820	700	6	25	140	460	960	280	1700	
										1690	100	2590	150	760	380	960	840	8	25	140	670	1730	480	2878	
KP200-150-570	1480	55	250M	1006.1	55	569.3	600	500	460	930	65	1610	150	650	360	960	840	6	25	140	670	410	260	1338	
		75	280S							1000	75	1680	150	690	360	960	840	6	25	140	670	555	285	1508	
		90	280M							1050	75	1730	150	710	360	960	840	6	25	140	670	610	285	1563	
		110	315S							1270	80	1790	150	740	360	960	840	6	25	140	670	750	300	1718	
		132	315M							1340	80	1850	150	770	360	960	840	6	25	140	670	875	320	1863	
		200	315L							1340	80	1900	150	800	360	960	840	6	25	140	670	960	340	1968	
		280	335(6KV)							1690	100	2590	150	760	380	960	840	8	25	140	670	1730	480	2878	
										1690	100	2590	150	760	380	960	840	8	25	140	670	1730	480	2878	
KP250-200-340	1480	30	200L	1006.1	55	569.3	450	450	368	775	55	1490	150	590	420	680	650	6	25	140	478	238	260	976	
		37	225S							820	60	1520	150	610	420	680	650	6	25	140	478	298	260	1036	
		45	225M							845	60	1540	150	620	420	680	650	6	25	140	478	322	260	1060	
		55	250M							930	65	1610	150	650	420	680	650	6	25	140	478	410	280	1168	
		75	280S							1000	75	1680	150	690	420	680	650	6	25	140	478	555	280	1313	
		90	280M							1050	75	1730	150	710	420	680	650	6	25	140	478	610	280	1368	
KP250-200-430	1480	37	225S	1006.1	55	569.3	500	500	400	820	60	1530	150	610	420	820	700	6	25	150	568	298	260	1118	
		45	225M							845	60	1550	150	620	420	820	700	6	25	150	568	322	260	1142	
		55	250M							930	65	1620	150	660	420	820	700	6	25	150	568	410	280	1250	
		75	280S							1000	75	1690	150	690	420	820	700	6	25	150	568	555	280	1395	
		90	280M							1050	75	1740	150	720	420	820	700	6	25	150	568	610	280	1450	
		110	315S							1340	80	1800	150	750	420	820	700	6	25	150	568	750	310	1620	
		132	315M							1340	80	1850	150	770	420	820	700	6	25	150	568	875	310	1745	
		200	315L							1340	80	1900	150	800	420	820	700	6	25	150	568	960	310	1830	

Note: Dimensions and weight deviations subject to selected motor manufacturer are to be considered.



**KP**  
series

Installation Dimension

Horizontal Arrangement Dimensions (4/5)

Unit: mm, unless other wise stated

Model	Speed (r/min)	Power (KW)	Motor Size	Pump					Motor		Baseplate							Weight (Kg)						
				CP	U	W	YY	X	HZ	C	MU	HB	HP	HL	HD/HS	HA	HE	n	HH	HR	Pump	Motor	Baseplate	Total
KP250-200-530	1480	75	280S	1110.8	65	637.3	600	500	470	1000	75	1760	150	730	440	960	840	6	25	150	710	555	280	1545
		90	280M							1050	75	1810	150	750	440	960	840	6	25	150	710	610	280	1600
		110	315S							1340	80	1870	150	780	440	960	840	6	25	150	710	750	350	1810
		132	315M							1340	80	1920	150	810	440	960	840	6	25	150	710	875	350	1935
		200	315L							1340	80	1970	150	830	440	960	840	6	25	150	710	960	350	2020
		315	355(6KV)							1690	100	2670	150	790	460	960	840	8	25	150	710	1730	540	2980
		355	400(6KV)							1860	110	2780	150	820	460	1070	950	8	25	150	710	2050	610	3370
KP250-200-660	1480	110	315S	1110.8	65	637.3	650	550	525	1340	80	1880	150	790	450	960	840	6	25	160	1020	750	360	2104
		132	315M							1340	80	1930	150	810	450	960	840	6	25	160	1020	875	360	2229
		200	315L							1340	80	1980	150	840	450	960	840	6	25	160	1020	960	360	2314
		315	355(6KV)							1690	100	2680	150	790	450	960	840	8	25	160	1020	1730	560	3284
		355	400(6KV)							1860	110	2790	150	830	450	1070	950	8	25	160	1020	2050	610	3654
KP300-250-280	1480	30	200L	1006.1	55	569.3	500	450	404	775	55	1490	150	590	460	820	700	6	25	140	650	238	270	1158
		37	225S							820	60	1520	150	610	460	820	700	6	25	140	650	298	280	1228
		45	225M							845	60	1540	150	620	460	820	700	6	25	140	65	322	280	1252
		55	250M							930	65	1610	150	650	460	820	700	6	25	140	650	410	280	1340
		75	280S							1000	75	1680	150	690	460	820	700	6	25	140	650	555	280	1485
KP300-250-390	1480	75	280S	1110.8	65	637.3	500	500	417	1000	75	1760	150	730	480	960	840	6	25	150	668	555	340	1563
		90	280M							1050	75	1810	150	750	480	960	840	6	25	150	668	610	340	1618
		110	315S							1340	80	1870	150	780	480	960	840	6	25	150	668	750	360	1778
		132	315M							1340	80	1920	150	810	480	960	840	6	25	150	668	875	360	1903
		200	315L							1340	80	1970	150	830	480	960	840	6	25	150	668	960	360	1988
KP300-250-490	1480	90	280M	1316.5	75	736.5	550	550	583	1050	75	1950	150	820	500	960	840	6	25	200	950	610	420	1980
		110	315S							1340	80	2020	150	860	500	960	840	6	25	200	950	750	420	2120
		132	315M							1340	80	2070	150	590	500	960	840	8	25	200	950	875	450	2275
		200	315L							1340	80	2120	150	600	500	960	840	8	25	200	950	960	450	2360
		315	355(6KV)							1690	100	2800	150	830	520	960	840	8	25	200	950	1730	620	3300
		355	400(6KV)							1860	110	2920	150	870	520	1070	950	8	25	200	950	2050	720	3720
KP300-250-610	1480	132	315M	1316.5	75	736.5	650	550	640	1340	80	2070	150	590	500	1070	950	8	25	200	1125	875	440	2441
		200	315L							1340	80	2120	150	600	500	1070	950	8	25	200	1125	960	440	2526
		315	355(6KV)							1690	100	2850	150	850	520	1070	950	8	25	210	1125	1730	640	3496
		560	400(6KV)							1860	110	2930	150	870	520	1070	950	8	25	210	1125	2430	740	426
		630	450(6KV)							1900	120	3200	150	960	520	1170	1050	8	25	210	1125	3030	740	4896
KP300-250-780	1480	560	400(6KV)	1527	85	870	700	600	680	1860	110	3110	200	900	590	1070	950	8	30	200	1350	2430	920	4700
		710	450(6KV)							1900	120	3370	200	990	590	1170	1050	8	30	200	1350	2170	950	4470
		800	450(6KV)							1900	120	3370	200	990	590	1170	1050	8	30	200	1350	2280	1050	4680
		1000	500(6KV)							1900	120	3630	200	800	590	1320	1200	8	30	200	1350	3960	1150	6460
KP300-250-270	1480	30	200L	1006.1	55	569.3	500	500	300	775	55	1490	150	590	460	820	700	6	25	140	650	238	270	1158
		45	225M							845	60	1510	150	620	460	820	700	6	25	140	650	322	280	1252
		55	250M							930	65	1610	150	650	460	820	700	6	25	140	650	410	280	1340
KP350-300-330	1480	55	250M	1110.8	65	637.3	600	520	465	930	65	1710	150	700	510	920	800	6	25	175	800	410	350	1560
		75	280S							1000	75	1780	150	740	510	920	800	6	25	175	800	555	350	1705
		90	280M							1050	75	1830	150	760	510	920	800	6	25	175	800	610	350	1760
		110	315S							1340	80	1900	150	800	510	920	800	6	25	175	800	750	370	1920
		132	315M							1340	80	1950	150	820	510	920	800	6	25	175	800	875	370	2045
KP350-350-310	1480	55	250M	1110.8	65	637.3	600	520	465	930	65	1950	150	820	510	960	840	6	25	175	800	410	350	1560
		75	280S							1000	75	1950	150	820	510	960	840	6	25	175	800	555	350	1705
		90	280M							1050	75	1950	150	820	510	960	840	6	25	175	800	610	350	1760
		110	315S							1340	80	1950	150	820	510	960	840	6	25	175	800	750	370	1920
		132	315M							1340	80	1950	150	820	510	960	840	6	25	175	800	875	370	2045
KP400-300-450	1480	90	280M	1316.5	75	736.5	650	550	590	1050	75	1960	150	830	530	960	840	6	25	200	1000	610	450	2060
		110	315S							1340	80	2020	150	860	530	960	840	6	25	200	1000	750	450	2200
		132	315M							1340	80	2070	150	590	530	960	840	8	25	200	1000	875	510	2385
		200	351L							1340	80	2120	150	600	530	960	840	8	25	200	1000	960	510	2470
		315	355(6KV)							1690	100	2860	150	850	570	960	840	8	25	210	1000	1730	690	3420
		500	400(6KV)							1860	110	2940	150	880	570	1070	950	8	25	210	1000	2340	780	4120

Note: Dimensions and weight deviations subject to selected motor manufacturer are to be considered.



**KP**  
series

Installation Dimension

Horizontal Arrangement Dimensions (5/5)

Unit: mm, unless other wise stated

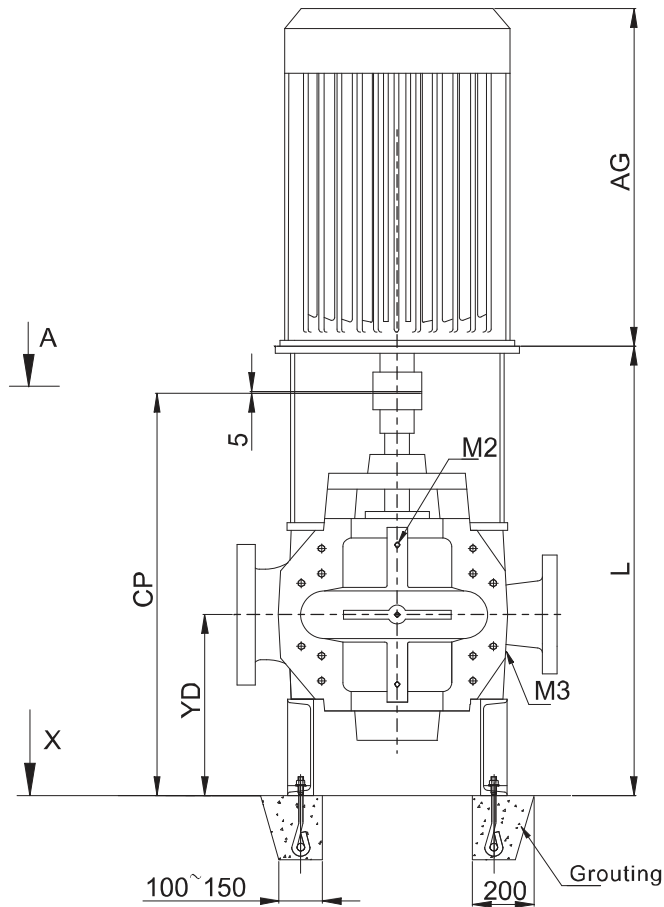
Model	Speed (r/min)	Power (KW)	Motor Size	Pump						Motor		Baseplate								Weight (Kg)				
				CP	U	W	YY	X	HZ	C	MU	HB	HP	HL	HD/HS	HA	HE	n	HH	HR	Pump	Motor	Baseplate	Total
KP400-300-570	1480	200	315L	1527	85	870	700	650	530	1340	80	2270	150	650	600	1270	1090	8	30	210	1505	960	500	2940
		315	355(6KV)							1690	100	2990	150	890	600	1270	1090	8	30	210	1505	1730	790	4000
		560	400(6KV)							1860	110	3070	150	920	600	1270	1090	8	30	210	1505	2430	880	4790
		630	450(6KV)							1900	120	3330	150	1010	600	1270	1090	8	30	210	1505	3030	880	5390
KP400-300-700	1480	315	355(6KV)	1527	85	870	700	650	530	1690	100	3030	200	870	620	1170	1050	8	30	200	1650	1730	810	4190
		560	400(6KV)							1860	110	3110	200	900	620	1170	1050	8	30	200	1650	2430	920	5000
		900	450(6KV)							1900	120	3370	200	990	620	1170	1050	8	30	200	1650	3460	950	6060
		1000	500(6KV)							2220	130	3630	200	1070	620	1170	1050	8	30	200	1650	3960	1050	6660
KP400-350-380	1480	160	315L	1316.5	75	736.5	670	570	513	1340	80	2170	200	590	520	920	790	8	25	200	880	960	690	2530
		160	315L							1340	80	2170	200	590	520	920	790	8	25	200	880	960	690	2530
		110	315S							1340	80	2070	200	830	520	920	790	6	25	200	880	750	430	2060
KP400-350-380	1480	90	280M	1316.5	75	736.5	670	570	513	1050	75	2010	200	800	520	920	790	6	25	200	880	610	350	1840
		110	315S							1340	80	2070	200	830	520	920	790	6	25	200	880	750	430	2060
		132	315M							1340	80	2120	200	570	520	920	790	8	25	200	880	875	460	2215
		200	315L							1340	80	2170	200	590	520	920	790	8	25	200	880	1080	690	2650
		315	355(6KV)							1690	100	2900	200	830	520	920	790	8	25	200	880	1730	660	3270
KP400-350-520	1480	315	355(6KV)	1527	85	870	700	650	535	1690	100	2990	150	890	590	1260	1100	8	30	210	1350	1730	800	3880
		560	400(6KV)							1860	110	3070	150	920	590	1260	1100	8	30	210	1350	2430	900	4680
		800	450(6KV)							1900	120	3330	150	750	590	1260	1100	10	30	210	1350	3230	900	5480
KP500-400-540	1480	1000	Y5006-4	1773	100	1009	700	700	600	2220	130	3850	300	800	620/620	1260	1150	10	30	210	1870	3690	1200	7160
		800	Y4506-4							1900	120	3600	300	1000	620/620	1180	1050	8	30	210	1870	3230	1200	6430
		500	Y4005-4							1860	110	3400	300	950	620/620	1180	1050	8	30	210	1870	2340	1100	5440
KP500-400-660	1480	1400	Y50010-4	1773	100	1009	850	750	641	2220	130	3880	200	870	680	1360	1240	10	30	310	2400	4580	1300	8280
		1120	Y5007-4							2220	130	3880	200	870	680	1360	1240	10	30	310	2400	4110	1300	7810
		800	Y4507-4							1900	120	3620	200	800	680	1360	1240	10	30	310	2400	3230	1200	6830

Note: Dimensions and weight deviations subject to selected motor manufacturer are to be considered.



**Vertical Pump with Motor (Standard) Dimensions**

Unit: mm, unless other wise stated

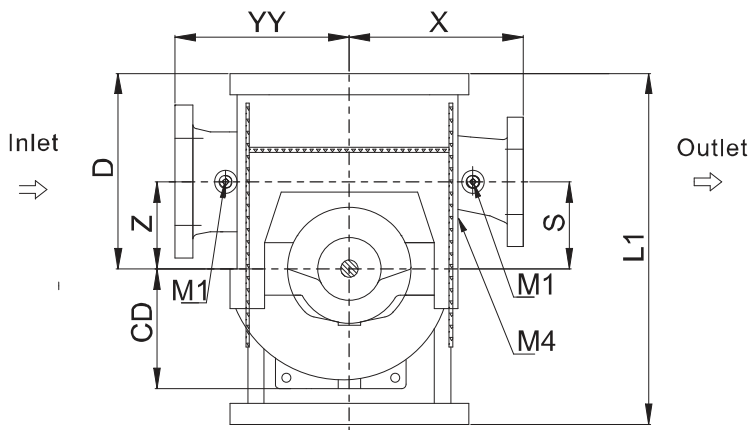


Direction of Rotation: Clockwise

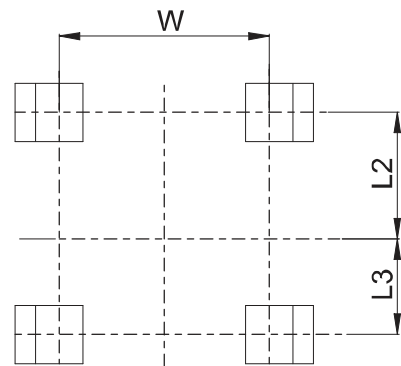
After alignment fill baseplate with non-shrinking concrete  
Position of the terminal box is in accordance with the motor standard.  
Connect pipes without stress

Connections

- M1 Pressure gauge G1/2
- M2 Vent G1/2
- M3 Drainage G1/2
- M4 Leakage liquid drain G3/4



A-B



View X



KP

Dimensions—Vertical Arrangement

Unit: mm, unless other wise stated

Model	Motor Size	Power (KW)	Dimensions													Installation
			CP	YY	X	S/Z	D	YD	CD	L	W	L1	L2	L3	AG	
KP125-80-210V	min. 100L	3	840	300	300	150	315	400	270	870	580/520	710	370	120	320	TB
	max. 200L	37								930					665	
KP125-80-270V	min. 132S	5.5	840	300	300	150	315	400	269	880	580/520	710	370	120	395	TB
	max. 280M	90								960					860	
KP125-80-350V	min. 160M	11	840	330	330	140	315	400	333	880	580/520	710	370	120	495	TB/TK
	max. 315L	160								990					1170	
KP150-100-250V	min. 132M	7.5	840	330	330	170	355	385	328	920	580/520	695	315	115	435	TB
	max. 280M	90								980					910	
KP150-100-320V	min. 160L	15	840	330	330	170	355	385	342	950	580/520	695	315	115	540	TB/TK
	max. 315L	200								1010					1170	
KP150-100-400V	min. 180L	22	840	370	370	170	355	385	260	950	580/520	695	315	115	600	TB
	max. 225M	55								980					705	
KP200-125-240V	min. 160M	11	875	370	370	200	400	400	300	990	560	855	360	210	495	TB/TK
	max. 315L	160								1070					1170	
KP200-125-300V	min. 180M	18.5	875	370	370	200	400	400	325	990	560	855	360	210	560	TB/TK
	max. 355M	250								1070					1400	
KP200-125-380V	min. 200L	30	875	395	370	200	400	400	350	990	560	855	360	210	665	TB/TK
	max. 355L	280								1070					1170	
KP200-125-480V	min. 225M	45	875	450	450	200	400	400	389	990	560	855	360	210	705	TB
	max. 315S	110								1050					1100	
KP200-150-290V	min. 180M	18.5	875	400	400	200	435	375	340	990	600	900	435	315	560	TB/TK
	max. 355L	280								1020					1400	
KP200-150-360V	min. 180M	18.5	875	400	400	200	435	375	380	990	600	900	435	315	560	TB
	max. 280S	75								1020					860	
KP200-150-460V	min. 280S	75	982	450	450	200	400	465	390	1125	600	900	435	315	860	TB/TK
	max. 315L	160								1155					1170	
KP200-150-570V	min. 315M	132	1002	600	500	300	500	465	460	1175	700	1060	460	315	1170	TK
	max. 355L	280								1175					1400	
KP250-200-340V	min. 225M	45	982	450	450	240	500	465	368	1125	700	1060	460	315	705	TB
	max. 280M	90								1125					910	
KP250-200-430V	min. 280S	75	982	500	500	240	500	465	400	1125	700	1060	460	315	770	TB/TK
	max. 315L	160								1155					1320	
KP250-200-530V	min. 280S	132	1134	600	500	300	560	505	470	1050	700	1120	520	315	860	TK
	max. 355L	315								1340					1400	
KP250-200-660V	min. 355L	315	1134	560	550	350	600	505	525	1340	700	1180	560	315	1400	TK/TJ
	max. 400(6KV)	500								/					1730	
KP300-250-270V	min. 200L	30	982	500	450	300	600	465	404	1095	700	855	360	210	665	TB
	max. 250M	55								1125					790	
KP300-250-280V	min. 200L	30	982	500	450	300	600	465	404	1095	700	855	360	210	665	TB
	max. 315S	110								1155					1100	
KP300-250-390V	min. 280M	90	1094	500	500	300	630	450	417	1235	850	1200	635	350	910	TB/TK
	max. 315L	200								1265					1170	
KP300-250-490V	min. 315L	160	1260	550	550	300	600	605	583	1430	840	1180	560	315	1030	TK/TJ
	max. 355(6KV)	315								/					2200	
KP300-250-610V	min. 355(6KV)	280	1280	650	550	350	630	605	640	/	860	1210	590	315	2200	TJ
	max. 400(6KV)	560								/					2300	
KP350-300-310V	min. 250M	55	1134	600	520	300	670	490	465	1275	865	1300	670	430	790	TB
	max. 315S	110								1305					1100	
KP350-300-330V	min. 250M	55	1134	600	520	300	670	490	465	1275	865	1300	670	430	790	TB/TK
	max. 315L	160								1305					1170	
KP400-300-450V	min. 315M	200	1260	650	550	350	700	605	590	1340	840	1250	630	315	1170	TK/TJ
	max. 400(6KV)	355								/					2300	
KP400-350-360V	min. 315S	110	1323	670	570	350	725	600	513	1500	834	1350	725	350	1100	TK
	max. 315L	160								1500					1170	
KP400-350-380V	min. 315S	110	1323	670	570	350	725	600	513	1500	834	1350	725	350	1100	TK
	max. 355M	250								1500					1400	

Note: Dimensions and weight deviations subject to selected motor manufacturer are to be considered.