



KG SERIES

KG SERIES CENTRIFUGAL VERTICAL IN-LINE PUMP



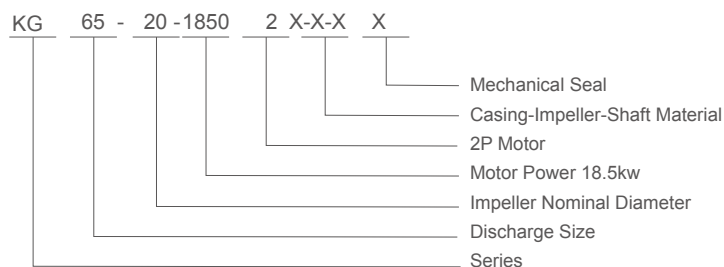
Vertical In-line Centrifugal Pump

Description & Feature

SFI KG series are vertical in-line pumps. The biggest feature is vertical structure which sharply reduces installation space. Motor shaft is plugged into pump shaft to ensure alignment of pump and motor. This series pump adopts IEC standard motor and pump head can be assembled separately.



Model instruction



Material Code

C:Cast Iron 45:ASTM 1045S
 Q:Ductile Iron 304:ASTM 1045
 B:bronee 316:ASTM 304
 S: ASTM 420 M:Mechanical Seal



Design & Structure

Design	Performance referring to BS EN733 / DIN24255 standard
Structure	Vertical, Single-Stage, Single-Suction, Volute , Casing, In-line, Close-coupled
DN(mm)	40~200
Flange	DIN2501 PN16 GB / T17241.6 PN1.6
Motor	IEC standard motor

Applications

- Cold and Hot Water
- Municipal water supply
- HVAC and Cooling Tower
- Booster Pump
- Pool and fountain water transfer

Material

Part	Standard Material	Options on request
Casing	Cast Iron	Ductile Iron
Impeller	bronee	Cast Iron / ASTM304 / ASTM316
Shaft	ASTM420	ASTM304 / ASTM304 / ASTM1045
Shaft Seal	Mechanical Seal	-

Operating Data

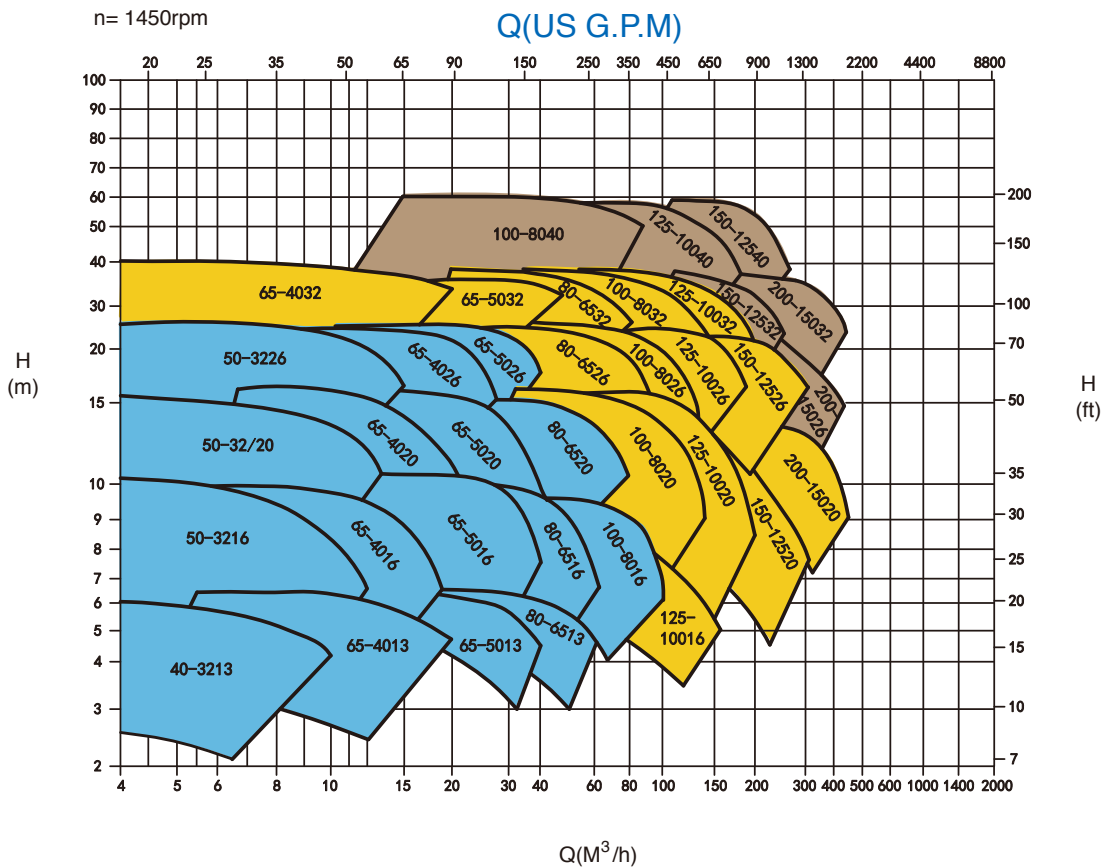
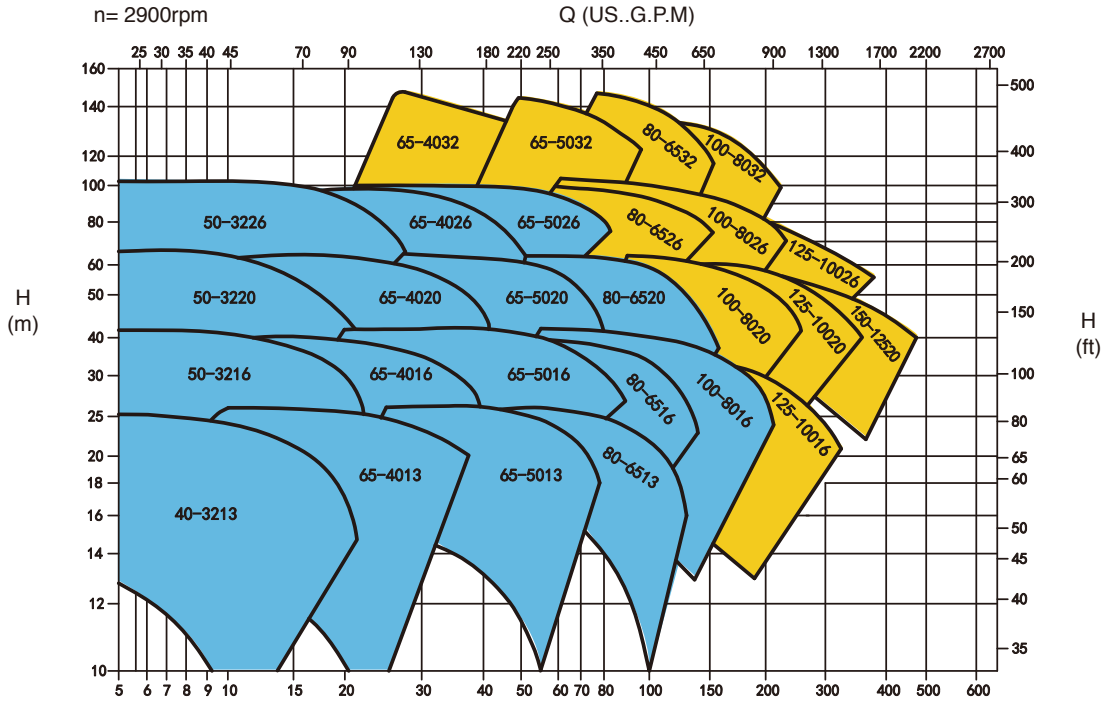
Flow RAte(Q)	4~1584m ³ /h
Head(H)	8~150m
Speed	1450 or 2900 rpm(50Hz)
Max Temperature	85°C(standard)
Working Pressure	1.0 Mpa standard; 1.6 MPa on request
Conveying Medium	Clean water or liquids similar to clean water in physical property



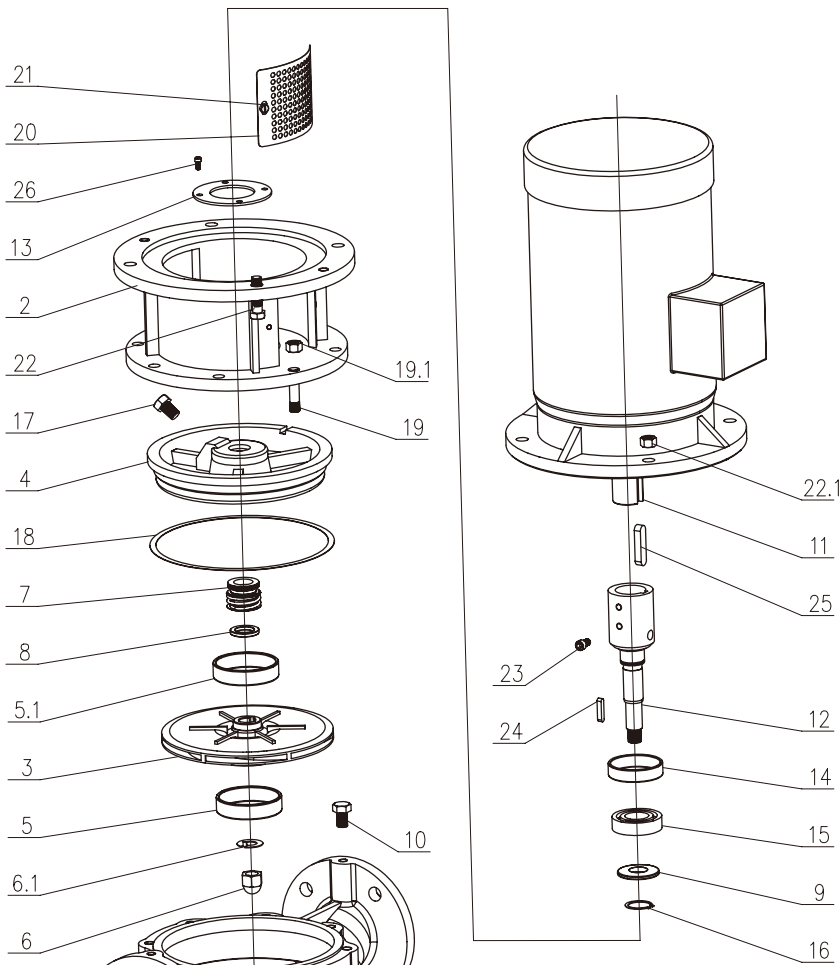
KG
series

Vertical In-line Centrifugal Pump

KG Series-50Hz Performance



KG Series Explode View & List of Parts



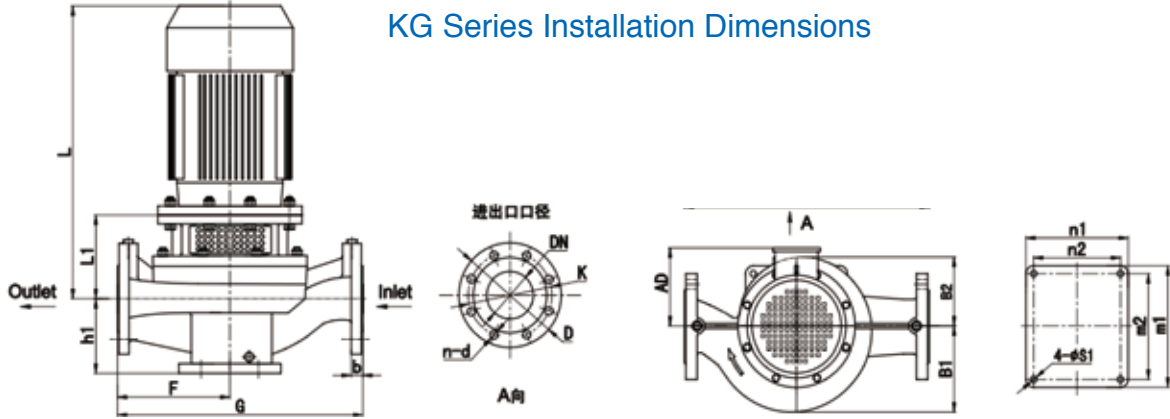
Code	Part Name	Code	Part Name
1	Casing	14	Rubber Seat
2	Adapter	15	Bearing
3	Impeller	16	External Circlip
4	Casing Cover	17	Plug
5	Wear Ring(Front)	18	Casing Gasket
5.1	Wear Ring(Back)	19	Screw Bolt
6	Impeller Nut	19.1	Screw Nut
6.1	Lock Washer	20	Guard
7	Mech.Seal	21	Screw
8	Seal Seat	22	Screw Bolt
9	Rubber Slinger	22.1	Screw Nut
10	Plug	23	Screw
11	V1 Motor	24	Key
12	Shaft	25	Key
13	Bearing Cover	26	Screw



KG series

End Suction Centrifugal Pump

KG Series Installation Dimensions



KG	Motor(V1)		Installation Dimensions(mm)										Flange Dimensions(mm)					Weight(kg)			
	Model	Model	kw	h1	L1	F	G	L	AD	B1	B2	n2xm2	n1xm1	s1	DN	D	K	n-d	b	Pump	Motor
KG40-3213-00554	Y2-801-4	0.55	113	152	150	310	407	145	104	95	170x200	200x230	12	40	150	110	18	32	16	48	
KG40-3213-01102	Y2-802-2	1.1					422	155										32	17	49	
KG40-3213-01502	Y2-90S-2	1.5					447	155										32	21	53	
KG40-3213-02202	Y2-90L-2	2.2					447	155										32	26	57	
KG65-4013-00554	Y2-801-4	0.55	128	164	175	360	407	145	113	99	170x200	200x230	12	65	185	145	20	37	16	53	
KG65-4013-01502	Y2-90S-2	1.5					422	155										38	21	59	
KG65-4013-02202	Y2-90L-2	2.2					447	155										38	26	63	
KG65-4013-03002	Y2-100L-2	3					489	180										40	44	84	
KG65-4013-04002	Y2-112M-2	4					504	190										40	43	83	
KG65-5013-00554	Y2-801-4	0.55	155	152	200	410	407	145	130	105	170x200	200x230	12	65	185	145	20	40	16	56	
KG65-5013-00754	Y2-802-4	0.75					407	155										40	17	57	
KG65-5013-01104	Y2-90S-4	1.1					407	190										41	22	63	
KG65-5013-00402	Y2-112M-2	4					407	190										46	43	89	
KG65-5013-05502	Y2-132S1-2	5.5	187	187	200	410	577	210	130	105	170x200	200x230	12	65	185	145	20	49	65	115	
KG65-5013-07502	Y2-132S2-2	7.5					577	210										49	69	119	
KG80-6513-07554	Y2-802-4	0.75	160	152	220	460	407	145	140	116	170x200	200x230	12	80	200	160	25	44	17	61	
KG80-6513-01104	Y2-90S-4	1.1					422	155										45	22	68	
KG80-6513-07502	Y2-132S2-2	7.5					577	210										54	69	123	
KG50-6513-11002	Y2-169M1-2	11					725	255										62	108	170	
KG50-3216-00554	Y2-801-4	0.55	118	152	160	320	407	145	115	115	170x200	200x230	12	50	165	125	20	36	16	52	
KG50-3216-00754	Y2-802-4	0.75					447	155										36	17	53	
KG50-3216-02202	Y2-90L-2	2.2					489	180										36	26	62	
KG50-3216-03002	Y2-100L-2	3					489	180										38	44	82	
KG50-3216-04002	Y2-112M-2	4	164	164	160	320	504	190	115	115	170x200	200x230	12	50	165	125	20	38	43	81	
KG50-3216-05502	Y2-132S1-2	5.5					577	210										42	65	107	
KG65-4016-00554	Y2-801-4	0.55	138	152	175	370	407	145	128	115	170x200	200x230	12	65	185	145	20	42	16	58	
KG65-4016-00754	Y2-801-4	0.75					422	155										42	17	59	
KG65-4016-01104	Y2-90S-4	1.1					489	180										43	22	65	
KG65-4016-03002	Y2-100L-2	3					489	180										44	44	88	
KG65-4016-04002	Y2-112M-2	4	164	164	175	370	504	190	128	115	170x200	200x230	12	65	185	145	20	44	43	87	
KG65-4016-05502	Y2-132S1-2	5.5					577	210										49	65	114	
KG65-4016-07502	Y2-132S2-2	7.5	187	187	175	370	577	210	128	115	170x200	200x230	12	65	185	145	20	49	69	118	
KG65-5016-00554	Y2-801-4	0.55					44	16										60			
KG65-5016-00754	Y2-802-4	0.75	138	152	220	440	407	145	140	120	170x200	200x230	12	65	185	145	20	44	17	61	
KG65-5016-01104	Y2-90S-4	1.1					422	155										45	22	67	
KG65-5016-01502	Y2-90L-4	1.5					447	155										45	27	71	
KG65-5016-05502	Y2-132S1-2	5.5					577	210										51	65	116	
KG65-5016-07502	Y2-132S2-2	7.5	187	187	175	370	577	210	140	120	170x200	200x230	12	65	185	145	20	51	69	120	
KG65-5016-11002	Y2-160M1-2	11					725	255										54	108	162	
KG65-5016-15002	Y2-160M2-2	15	220	220	220	480	725	255	162	132	170x200	200x230	12	80	200	160	25	54	109	163	
KG65-6516-00754	Y2-802-4	0.75					407	145										50	17	67	
KG65-6516-01104	Y2-90S-4	1.1	158	152	164	480	422	155	162	132	170x200	200x230	12	80	200	160	25	52	122	74	
KG65-6516-01504	Y2-90L-4	1.5					447	155										52	27	79	
KG65-6516-02204	Y2-100L1-4	2.2					489	180										55	34	88	
KG65-6516-07502	Y2-132S2-2	7.5					577	210										60	69	129	
KG65-6516-11002	Y2-160M1-2	11	220	220	220	480	725	255	162	132	170x200	200x230	12	80	200	160	25	62	108	170	
KG65-6516-15002	Y2-160M2-2	15					725	255										62	109	171	

Installation Dimension

KG		Motor(V1)		Installation Dimensions(mm)										Flange Dimensions(mm)					Weight(kg)		
Model	Model	kw	h1	L1	F	G	L	AD	B1	B2	n2xm2	n1xm1	s1	DN	D	K	n-d	b	Pump	Motor	Total
KG100-8016-01504	Y2-90L-4	1.5	188	152	260	540	447	155	168	136	170x230	200x230	12	100	220	180	8-φ18	24	56	27	83
KG100-8016-02204	Y2-100L1-4	2.2		164			489	180											65	34	92
KG100-8016-03004	Y2-100L2-4	3		220			489	180											58	37	95
KG100-8016-11002	Y2-160M1-2	11		780			810	280											65	108	173
KG100-8016-15002	Y2-160M2-2	15		882			305	65											109	174	
KG100-8016-18502	Y2-160L-2	1.5		810			280	65											133	198	
KG100-8016-22002	Y2-180M-2	22		882			305	66											155	221	
KG100-8016-30002	Y2-200L1-2	30	882	305	73	244	298														
KG125-10016-03004	Y2-100L2-4	3	220	179	330	690	504	180	168	136	300x300	300x300	18	125	250	210	26	100	37	137	
KG125-10016-04004	Y2-112M-2	4	179	519	190	102	47	149													
KG125-10016-18502	Y2-160L-2	18.5	220	234	330	690	794	255	202	162	300x300	300x300	18	125	250	210	8-φ18	26	108	133	241
KG125-10016-22002	Y2-180M-2	22	824	280	110	155	265														
KG125-10016-22002	Y2-200L1-2	30	237	897	305	113	224	337													
KG50-3220-00554	Y2-801-4	0.55	118	151	210	420	406	145	137	134	170x200	200x230	14	50	165	1265	25	45	16	61	
KG50-3220-00754	Y2-802-4	0.75					421	155										45	17	62	
KG50-3220-01104	Y2-90S-4	1.1					446	155										46	22	68	
KG50-3220-01504	Y2-90L-4	1.5					489	210										46	27	72	
KG50-3220-00502	Y2-132S1-2	5.5					186	489										210	51	65	116
KG50-3220-07502	Y2-132S2-2	7.5					723	255										51	69	120	
KG50-3220-11002	Y2-160M1-2	11					218	723										255	55	108	163
KG65-4020-00754	Y2-802-4	0.75	406	145	50	17	67														
KG65-4020-01104	Y2-90S-4	1.1	421	145	51	22	73														
KG65-4020-01504	Y2-90L-4	1.5	446	145	51	27	77														
KG65-4020-05502	Y2-132S1-2	5.5	186	576	215	56	65	121													
KG65-4020-07502	Y2-132S2-2	7.5	723	255	56	69	125														
KG65-4020-11002	Y2-160M1-2	11	218	723	255	60	108	168													
KG65-5020-01504	Y2-90L-4	1.5	154	449	155	52	27	78													
KG65-5020-02204	Y2-100L1-4	2.2	166	491	180	64	34	87													
KG65-5020-03004	Y2-100L2-4	3	726	255	54	37	90														
KG65-5020-11002	Y2-160M1-2	11	781	255	61	108	169														
KG65-5020-15002	Y2-160M2-2	1.5	221	781	255	61	109	170													
KG65-5020-18502	Y2-160L1-4	18.5	781	255	61	133	194														
KG80-6520-02204	Y2-100L2-4	2.2	150	163	260	540	488	180	170	148	170x200	200x230	14	80	200	160	8-φ18	25	62	34	96
KG80-6520-03004	Y2-100L2-4	3					503	190											62	37	99
KG80-6520-04004	Y2-112M-4	4					723	255											69	109	178
KG80-6520-15002	Y2-160M2-2	15					778	255											69	133	202
KG80-6520-18502	Y2-160L-4	18.5					808	280											70	155	225
KG80-6520-22002	Y2-180M-2	22					881	305											76	224	300
KG80-6520-30002	Y2-200L1-2	30					881	305											76	37	113
KG100-8020-03004	Y2-100L2-4	3	504	180	76	47	123														
KG100-8020-04004	Y2-112M1-4	4	519	190	76	47	123														
KG100-8020-05504	Y2-132S-4	5.5	592	210	80	65	145														
KG100-8020-07504	Y2-132M-4	7.5	632	210	80	79	158														
KG100-8020-30004	Y2-180M-2	22	824	280	8	155	243														
KG100-8020-30002	Y2-200L1-2	30	897	305	890	224	314														
KG100-8020-37002	Y2-200L2-2	37	942	335	90	235	325														
KG100-8020-45002	Y2-225M-2	45	942	335	95	286	380														
KG125-10020-04004	Y2-112M-4	4	179	519	190	97	47	144													
KG125-10020-05504	Y2-132S-4	5.5	202	592	210	99	65	164													
KG125-10020-07504	Y2-132M-4	7.5	234	632	210	103	79	178													
KG125-10020-11004	Y2-160M-4	11	234	739	254	109	108	211													
KG125-10020-30002	Y2-200L1-2	30	237	897	305	208	170	333													
KG125-10020-37002	Y2-200L2-2	37	897	305	114	235	344														
KG125-10020-45002	Y2-225M-2	45	942	335	126	286	399														
KG125-10020-55002	Y2-250M-2	55	1041	370	126	373	499														
KG125-10020-75002	Y2-280S-2	75	1116	410	126	485	610														
KG125-12520-07504	Y2-132M-4	7.5	202	632	210	126	79	204													
KG125-12520-11004	Y2-160M-4	11	234	739	255	152	108	238													
KG125-12520-55002	Y2-250M-2	55	1041	370	242	186	153	373	525												
KG125-12520-75002	Y2-280S-2	75	1116	410	153	485	637														
KG125-12520-90002	Y2-280M-2	90	1166	410	153	541	694														
KG125-12520-11004	Y2-160M-4	11	766	255	165	108	273														
KG125-12520-15004	Y2-160L-4	15	821	255	165	129	294														
KG125-12520-18504	Y2-180M-4	18.5	851	280	167	157	324														
KG50-3326-02204	Y2-100L1-4	22	118	173	230	470	498	180	168	168	170x200	200x230	14	50	165	125	4-φ18	20	62	34	96



KG
series

Installation Dimension

KG		Motor(V1)		Installation Dimensions(mm)										Flange Dimensions(mm)					Weight(kg)																			
Model	Model	kw	h1	L1	F	G	L	AD	B1	B2	n2xm2	n1xm1	s1	DN	D	K	n-d	b	Pump	Motor	Total																	
KG50-3326-03004	Y2-100L2-4	3	188	173	230	470	498	180	168	168	170x200	200X230	14	50	165	125	4-φ18	20	62	37	99																	
KG50-3326-11002	Y2-160M1-2	11		733			255	70											108	178																		
KG50-3326-15002	Y2-160M2-2	15		788			255	70											109	179																		
KG50-3326-18502	Y2-160L1-2	18.5	173	230	470	489	180	168	168	168									168	168	50	165	125	4-φ18	20	66	34	100										
KG50-4026-02204	Y2-100L1-4	2.2																								733	255	74	37	103								
KG50-4026-03004	Y2-100M2-4	3																								788	255	74	108	182								
KG50-4026-11004	Y2-160M1-2	11	173	230	470	733	255	168	168	168				168	168	50			165	125	4-φ18	20	74	109	183													
KG50-4026-15002	Y2-160M2-2	15																					788	280	74	133	207											
KG50-4026-18502	Y2-160L-2	18.5																					818	280	74	155	229											
KG50-4026-22002	Y2-180M2-2	22	138	174	260	520	497	180	178	164				170x200	200X230	14			65	185	145	4-φ18	20	68	34	102												
KG50-5026-02204	Y2-100L1-4	2.2																						512	190	68	3	105										
KG50-5026-03004	Y2-100L2-4	3																						587	210	68	747	115										
KG50-5026-04004	Y2-112LM-4	4									788	280	71				65	137																				
KG50-5026-05504	Y2-132S-4	5.5									819	280	75				133	208																				
KG50-5026-18502	Y2-160L-2	18.5									892	305	76				155	231																				
KG50-5026-22002	Y2-180M-2	2									179	290	590				897	305	195	170	170			170x200	200X230	14	80	200	160	8-φ18	22	83	224	307				
KG50-5026-30002	Y2-200L1-2	230																														519	190	83	235	317		
KG50-5026-37002	Y2-200L2-2	37																														592	210	81	47	128		
KG50-6526-04004	Y2-112M-4	4																														632	210	83	65	148		
KG50-6526-05504	Y2-132S-4	5.5																														897	305	83	79	162		
KG50-6526-07504	Y2-132M-4	7.5																														942	335	95	224	219		
KG50-6526-30004	Y2-200L1-2	30	1041	370	95	235	330																															
KG50-6526-37002	Y2-200L2-2	37	592	210	99	286	385																															
KG50-6526-45002	Y2-225M-2	45	897	305	113	373	486																															
KG50-6526-05504	Y2-250M-2	55	1041	370	93	65	158																															
KG100-8026-05504	Y2-132S-4	5.5	592	210	188	310	630	632	210	208	184	170x200	200X230	14	100	220	180	8-φ18	24	93	79	172																
KG100-8026-07504	Y2-132M-4	7.5	739	255																93	79	172																
KG100-8026-11004	Y2-160M-4	11	897	305																99	108	207																
KG100-8026-37002	Y2-200L2-2	37	897	305	188	310	630	942	335	208	184	170x200	200X230	14	100	220	180	8-φ18	24	118	235	353																
KG100-8026-45002	Y2-225M-2	45	1041	370																120	286	406																
KG100-8026-55002	Y2-250M-2	55	1116	410																123	373	496																
KG100-8026-75002	Y2-280S-2	75	1116	410	150	340	700	743	255	222	192	200x250	200X300	80	125	250	210	8-φ18	26	123	485	607																
KG125-10026-11004	Y2-260M-4	11	743	255																125	108	233																
KG125-10026-15004	Y2-160L-4	15	798	255																125	129	254																
KG125-10026-18504	Y2-180M-4	18.5	828	280																125	157	282																
KG125-10026-75002	Y2-280S-2	75	1120	410																148	485	633																
KG125-10026-90002	Y2-280M-2	90	1170	410																148	541	689																
KG125-12526-15004	Y2-160L-4	15	234	360																760	798	255	245	210	245	210	300x350	300x350	200	340	295	12-φ18	30	155	129	284		
KG125-12526-18504	Y2-180M-4	18.5																																829	280	155	157	313
KG125-12526-22004	Y2-180L-4	22																																869	280	155	179	334
KG125-12526-30004	Y2-200L-4	2230	892	305																280	234	248	830	838	280	258	210	300x350	300x350	200	340	295	12-φ18	30	161	240	401	
KG125-15026-18504	Y2-180M-4	18.5	908	305																															194	157	351	
KG125-15026-22004	Y2-180L-4	22	908	305																															194	179	373	
KG125-15026-30004	Y2-200L-4	30	908	305	210	240	450																															
KG65-4032-03004	Y2-100L2-4	3	504	180	138	231	580	828	280	200	200	170x200	200x230	14	65	185	145	4-φ18	20																91	37	128	
KG65-4032-04004	Y2-112M-4	4	519	190																															91	47	138	
KG65-4032-05504	Y2-132S-4	5.5	591	210																															95	65	160	
KG65-4032-07504	Y2-132M-4	7.5	631	210																															95	79	173	
KG65-4032-22002	Y2-180M-4	22	828	280																															100	155	255	
KG65-4032-30002	Y2-200L1-2	30	897	305																															104	224	329	
KG65-4032-37002	Y2-200L2-2	37	897	305																															104	235	339	
KG65-4032-45002	Y2-225M-2	45	942	335																															112	286	397	
KG65-5032-05504	Y2-132S-4	5.5	591	210																98	65	164																
KG65-5032-07504	Y2-132M-4	7.5	631	210																98	79	177																
KG65-5032-11004	Y2-160M-4	11	743	255																103	108	211																
KG65-5032-37002	Y2-200L2-2	37	897	305																108	235	342																

Installation Dimension



KG		Motor(V1)		Installation Dimensions(mm)										Flange Dimensions(mm)					Weight(kg)																
Model	Model	kw	h1	L1	F	G	L	AD	B1	B2	n2xm2	n1xm1	s1	DN	D	K	n-d	b	Pump	Motor	Total														
KG65-5032-45002	Y2-225M-2	45	155	173	290	590	942	335	214	198	170x200	170x230		65	185	145	4-φ18	20	115	286	401														
KG65-5032-55002	Y2-250M-2	55		273			1043	370											1118	410	133	373	507												
KG65-5032-75002	Y2-280S-2	5.5					1118	410											134	485	618														
KG65-5032-07504	Y2-132M-4	7.5	175	201	310	640	631	210	224	210				80	200	160		22	115	79	194														
KG65-6532-11004	Y2-160M-4	11		235			740	255											118	108	226														
KG65-6532-15004	Y2-160L-4	15					795												118	129	246														
KG65-6532-45004	Y2-225M-2	45		252			957	335											139	286	424														
KG65-6532-55002	Y2-250M-2	55					1042	370											145	373	518														
KG65-6532-75002	Y2-280S-2	75		272			1117	410											145	485	630														
KG65-6532-90002	Y2-280M-2	90					1167												145	541	686														
KG65-8032-11004	Y2-160M-4	11		186			340	700											740	255	237	210		250x300	250x300	18	100	220	180	8-φ18	24	127	108	236	
KG65-8032-15004	Y2-160L-4	15																	235	795													127	129	256
KG65-8032-18504	Y2-180M-4	18.5			825	280			128	157	285																								
KG65-8032-75002	Y2-280S-2	75	272		1117	410			155	485	639																								
KG65-8032-15004	Y2-280M-2	90			1167				155	541	695																								
KG125-10032-15004	Y2-160L-4	15	240		360	740			795	255	246	220				125	250	210		26												148	129	276	
KG125-10032-18504	Y2-180M-4	18.5							235	825																						280	148	157	305
KG125-10032-22004	Y2-180L-4	22								865																							148	179	326
KG125-10032-30004	Y2-200L-4	30							237	897																						305	154	240	394
KG150-12532-15004	Y2-160L-4	15		260			400	895	809	255											266	226	340x340	420x420	18	150	285	240	8-φ22	30	196	129	325		
KG150-12532-18504	Y2-180M-4	18.5							249	839																					280	196	157	353	
KG150-12532-22004	Y2-180L-4	22								879																						196	179	375	
KG150-12532-30004	Y2-200L-4	30							284	909																					305	198	240	438	
KG150-12532-37004	Y2-225S-4	37								964																					335	206	301	507	
KG150-15032-30004	Y2-200L-4	30	250		910	305			241	240	481																								
KG150-15032-37004	Y2-225S-4	37			965				249	301	550																								
KG150-15032-45004	Y2-225M-4	45	285		990	335			249	312	562																								
KG150-15032-55004	Y2-250M-4	55			1055	370			264	383	647																								
KG100-8040-15004	Y2-160L-4	15	249	400	800	809	255	265	248	310x310	370x370	18	100	220	180	8-φ18	24	188	129	317															
KG100-8040-18504	Y2-180M-4	18.5				234	839											280	191	157	348														
KG100-8040-22004	Y2-180L-4	22				234	879												191	179	370														
KG100-8040-30004	Y2-200L-4	30					909											305	197	240	436														
KG125-10040-22004	Y2-180L-4	22				234	879											280	204	179	383														
KG125-10040-30004	Y2-200L-4	30					909											305	206	240	445														
KG125-10040-37004	Y2-225S-4	37				284	964											335	212	301	513														
KG125-10040-45004	Y2-225M-4	45					989												212	312	524														
KG125-12540-30004	Y2-200L-4	30				234	909											180	225	240	465														
KG125-12540-37004	Y2-225S-4	37		964	305	231	301	531																											
KG125-12540-45004	Y2-225M-4	45	284	989	335	231	312	543																											
KG125-12540-55004	Y2-250M-4	55		1054	370	235	383	617																											
KG125-12540-75004	Y2-280S-4	75	234	1129	410	236	544	780																											