



XA-SERIES PUMP

CENTRIFUGAL VERTICAL IN-LINE PUMP FOR

- ✦ FRESH/FLUSH WATER SUPPLY
- ✦ IRRIGATION
- ✦ BOOSTER UNITS
- ✦ BOILER FEEDING
- ✦ FIRE SERVICES PUMPS, ETC.

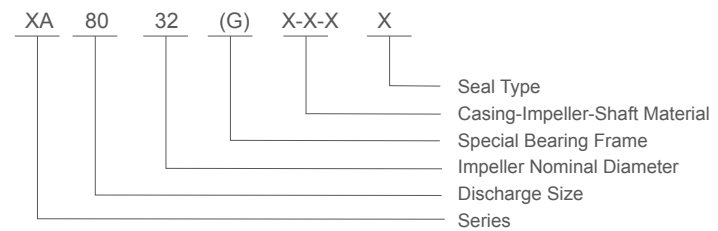




Description & Feature

SFI XA series and suction centrifugal pumps are designed complying to BS EN722 / DIN24255 standard. This series of pumps have great advantage in interchangeable parts, high quality and low cost, wide applications in plants, mines, city water supplies, fire-fighting systems, air-condition systems and irrigation.

Model instruction



Material Code

C:Cast Iron
 Q:Ductile Iron
 B:Brass
 S:ASTM 420
 45:ASTM 1045
 S304:ASTM 304
 S304:ASTM 316

- Bearing Frame Code
 H:bearing frame for double-row bearing
 G:bigger shaft and bearing frame
 Default:Standard
- Seal Type
 M:mechanical Seal
 P:Gland Packing

Design & Structure

Design	Performance and dimensions referring to the European standard BS EN733 / DIN24255
Structure	Horizontal,Axial End-Suction, Single-Stage, Single-Suction, Volute Casing, Back pull-out
DN(mm)	32~300
Flange	DIN2501 PN16 GB / T17241.6 PN1.6

Applications

- Water supply and drainage
- HVAC and Cooling Tower
- Marine-Ballasting & Blige
- Booster and Pressurization Set
- Irrigation and agriculture
- Water supply and drainage
- Food and chemical industry
(with stainless steel material)

Material

Part	Standard Material	Options on request
Casing	Cast Iron	Ductile Iron / ASTM304 / ASTM316
Impeller	Brass	Cast Iron / ASTM304 / ASTM316
Shaft	ASTM420	ASTM304 / ASTM304 / ASTM316
Shaft Seal	Mechanical Seal	Gland Packing

Operating Data

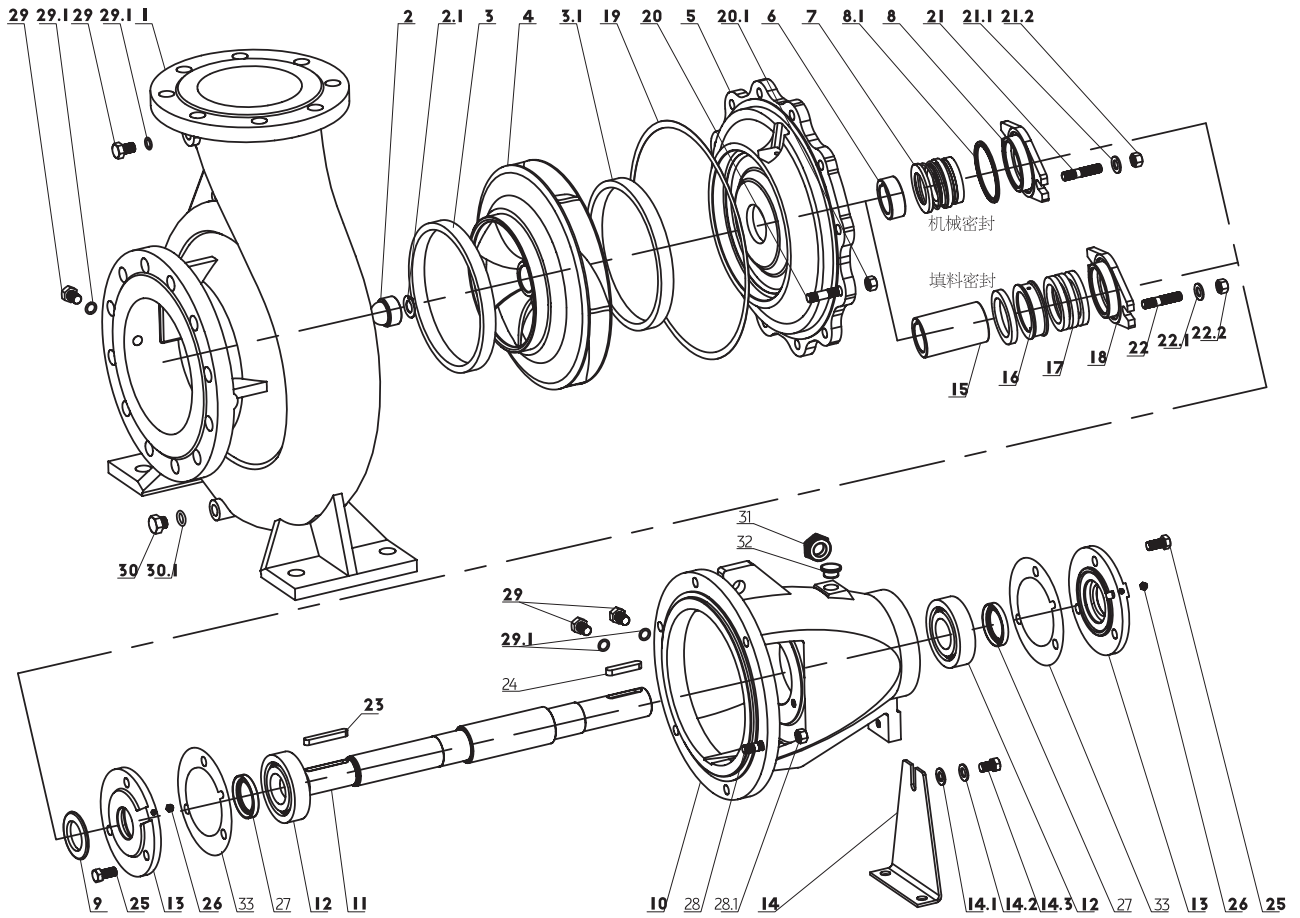
Flow RAte(Q)	4~1584m ³ /h
Head(H)	2~150m
Speed	1450 or 2900 rpm(50Hz) / 1750 or 3500 rpm(60Hz)
Max Temperature	85C(standard); 105C (on request)
Working Pressure	1.0 Mpa standard; 1.6 MPa on request
Conveying Medium	Clean water or liquids similar to clean water in physical property



XA
series

End Suction Centrifugal Pump

XA Series Explode View & List of Parts

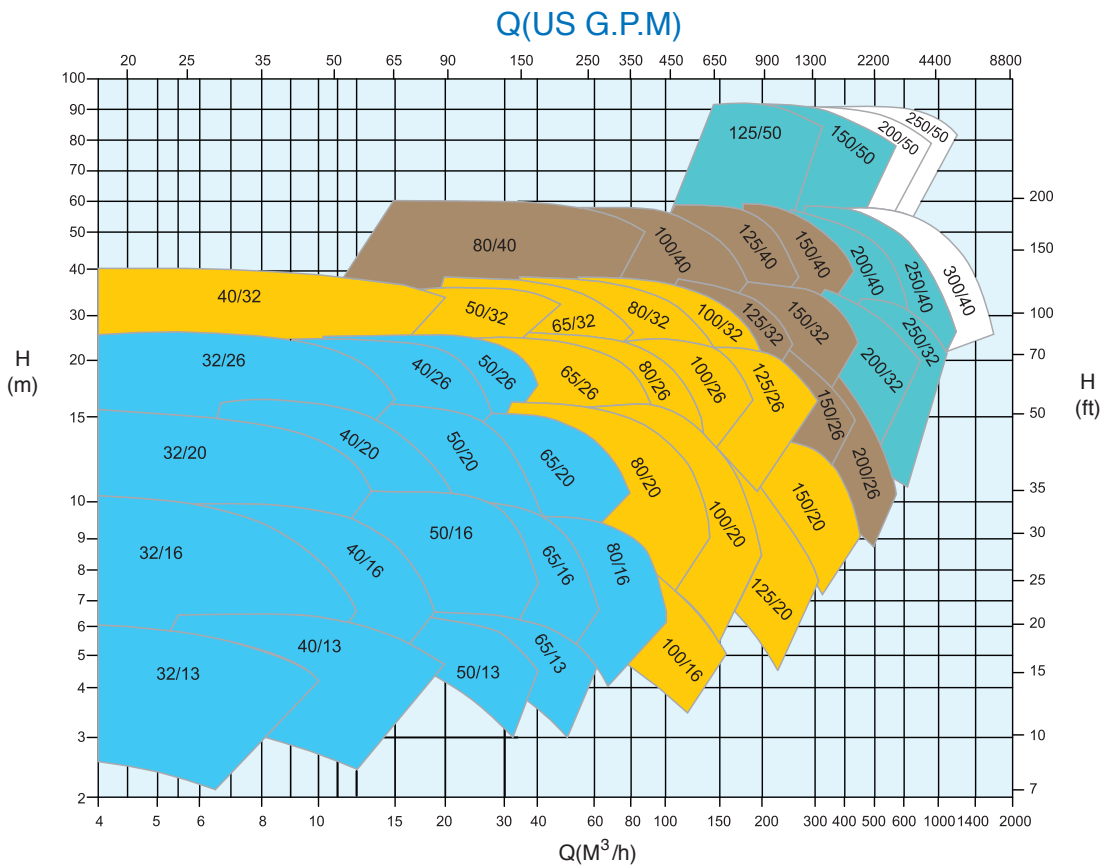
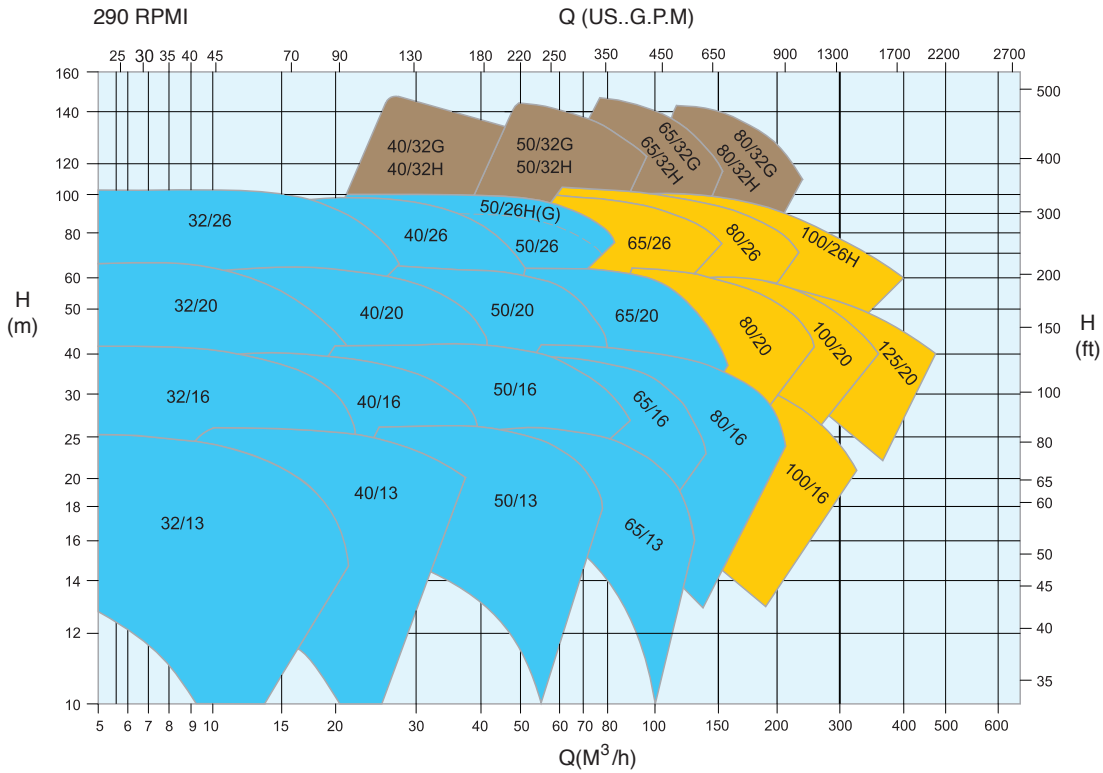


Code	Part Name
1	Casing
2	Impeller Nut
2.1	Lock Washer
3	Wera Ring(Front)
3.1	Wera Ring (Back)
4	Impeller
5	Casing Cover
6	Shaft Spacer
7	Mech.Seal
8	Seal Cover
8.1	O-ring
9	Rubber Slinger
10	Bearing Frame

Code	Part Name
11	Shaft
12	Bearing
13	Bearing Cover
14	Support Foot
14.1	Flat Washer
15	Packing Sleeve
16	Packing Seal Cage
	Throat Bushing
17	Cover Packing
18	Gland Cover
19	Casing Gasket
20	Stud Bolt
21	Stud Bolt

Code	Part Name
22	Stud Bolt
23	Key
24	Key
25	Screw Bolt
26	Oil Cup
27	Felting
	Oil Seal
28	Stud Bolt
29	Plug
30	Plug
31	Oil Scale
32	Oil Cover
33	Throat Bushing Gasket

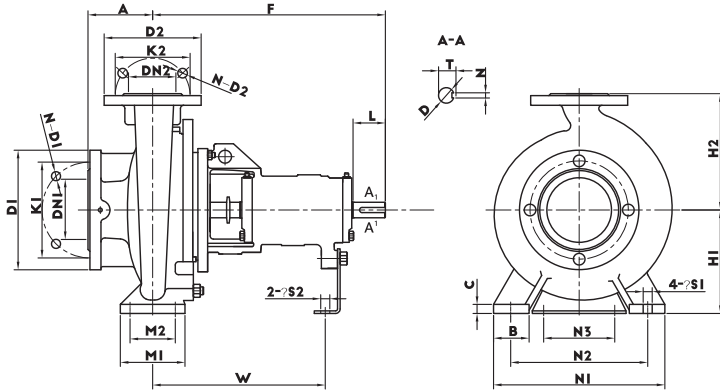
XA SERIES(50HZ)





XA
series

End Suction Centrifugal Pump

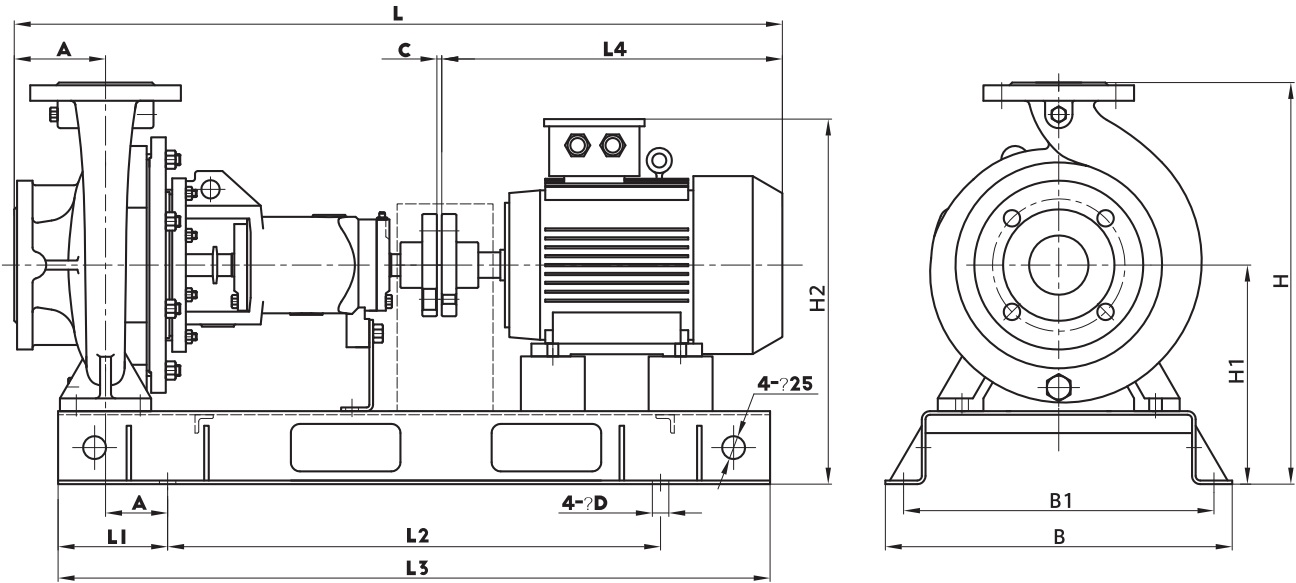


Flange Dimensions
(ISO7005.2 DIN2501 PN16 GB/T17241.6
PN1.6)

DN1/DN2	32	40	50	65	80	100
D1/D2	140	150	150	185	200	220
K1/K2	100	110	125	145	160	180
n-d1/n-d2	4-φ18	4-φ18	4-φ18	4-φ18	8-φ18	8-φ18

DN1/DN2	125	150	200	250	300	350
D1/D2	250	285	340	405	480	520
K1/K2	210	240	295	355	410	470
n-d1/n-d2	8-φ18	8-φ18	12-φ18	12-φ18	12-φ26	16-φ26

Model	Bearing Inner Dia	ND2	ND1	a	f	h1	h2	b	c	n3	m1	m2	n1	n2	S1	S2	w	d	l	t	u	Weight (kg)		
XA32/13	25	32	50	80	112	140	50	100	100	70	190	140	14	14	14	14	267	24	50	27	8	29		
XA32/16						132																160	35	
XA32/20						160																180	47	
XA32/26	35	40	65	100	180	225	65	110	125	95	320	250	14	14	14	267	24	50	27	8	58			
XA40/13					112	140	31																	
XA40/16					132	160	34																	
XA40/20	45	50	80	100	160	180	50	110	100	70	210	160	14	14	14	342	342	80	35	10	45			
XA40/26(H)					180	225															61			
XA40/32					200	250															94			
XA40/32(H)	35	40	65	125	470	200	250	65	110	125	95	345	280	14	14	14	342	342	80	35	10	107		
XA40/32G					200	250	105																	
XA50/13					132	160	35																	
XA50/16	25	50	100	360	160	180	50	110	70	70	265	212	14	14	14	267	24	50	27	8	39			
XA50/20					160	200															49			
XA50/26(H)					360	225															68			
XA50/26G	35	40	65	125	470	225	280	18	110	125	95	320	250	14	14	14	244	32	80	35	10	65		
XA50/32(H)					225	280	113																	
XA50/32G					225	280	105																	
XA65/13	25	65	80	100	160	180	65	14	125	95	280	212	14	14	14	367	42	110	45	12	12	41		
XA65/16					160	200																47		
XA65/20(H)					180	225																55		
XA65/20G	35	40	65	125	465	180	225	18	110	125	95	320	250	14	14	14	339	32	80	35	10	60		
XA65/26					200	250	87																	
XA65/32(H)					225	280	110																	
XA65/32G	45	50	80	100	525	224	280	18	110	160	120	400	315	14	14	14	367	42	110	45	12	12	120	
XA80/16					180	225	53																	
XA80/20					180	250	76																	
XA80/26	35	80	100	125	470	200	280	80	110	125	95	320	250	14	14	14	342	32	80	35	10	95		
XA80/32(H)					200	280	118																	
XA80/32G					250	315	130																	
XA80/40	45	50	65	100	530	280	355	83	18	110	160	120	440	340	18	14	270	42	110	45	12	12	160	
XA100/16					250	80	15	87																
XA100/20					200	280	84																	
XA100/26(H)	35	100	125	140	470	225	280	80	16	110	160	120	360	280	18	14	342	32	80	35	10	102		
XA100/32					250	315	118																	
XA100/40					530	280	355															100	20	176
XA125/20	35	125	150	140	470	250	315	80	16	110	160	120	400	315	18	14	342	32	80	35	10	112		
XA125/26					250	355	117																	
XA125/32					280	355	155																	
XA125/40	45	150	200	160	530	315	400	18	25	110	200	150	500	400	23	19	370	42	110	45	12	12	178	
XA125/50					670	355	400																300	
XA150/20					500	280	450																132	
XA150/26	45	150	200	160	500	280	450	100	18	110	200	150	450	350	23	19	342	32	80	35	10	10	132	
XA150/32					250	355	163																	
XA150/40					530	280	400																170	
XA150/50	55	200	250	180	315	450	120	20	110	220	170	600	480	28	19	14	380	42	110	45	12	12	207	
XA200/32					670	375																	500	330
XA200/40					550	315																	450	328
XA200/50	65	200	250	200	720	425	560	100	22	140	220	150	660	560	23	19	515	60	140	60	18	18	450	
XA250/32					691	355	520	366																
XA250/40					682	400	560	396																
XA250/50	65	250	300	250	720	450	670	120	32	140	240	190	650	650	23	19	515	60	140	64	18	18	550	
XA300/40					720	425																	120	30



序号	XA型号	电机Motor (B3)		水泵安装尺寸 (mm)														重量Weight(kg)			
	Model	型号Model	功率kw	a	H	C	L4	H1	H2	L	L1	L2	L3	s	w	B1	B	φd	单泵	电机	机组总重
1	XA32/13-04002	Y2-112M-2	4	80	312	4	400	172	360	844	80	560	750	25	60	294	330	16	29	43	93
2	XA32/13-03002	Y2-100L-2	3	80	312	4	385	172	342	829	80	560	750	25	60	244	280	16	29	44	91
3	XA32/13-02202	Y2-90L-2	2.2	80	312	4	345	172	332	789	80	560	750	25	60	244	280	16	29	26	73
4	XA32/13-01502	Y2-90S-2	1.5	80	312	4	320	172	332	764	80	560	750	25	60	244	280	16	29	21	69
5	XA32/13-01102	Y2-802-2	1.1	80	312	4	295	172	312	739	80	560	750	25	60	244	280	16	29	17	65
6	XA32/13-00752	Y2-801-2	0.75	80	312	4	295	172	312	739	80	560	750	25	60	244	280	16	29	16	64
7	XA32/13-00554	Y2-801-4	0.55	80	312	4	295	172	312	739	80	560	750	25	60	244	280	16	29	16	64
8	XA32/16-07502	Y2-132S2-2	7.5	80	365	4	470	205	418	914	70	630	800	25	73	317	350	18	35	69	135
9	XA32/16-05502	Y2-132S1-2	5.5	80	365	4	470	205	418	914	70	630	800	25	73	317	350	18	35	65	131
1	XA32/16-04002	Y2-112M-2	4	80	352	4	400	192	380	844	80	560	750	25	60	294	330	16	35	43	99
11	XA32/16-03002	Y2-100L-2	3	80	352	4	385	192	362	829	80	560	750	25	60	294	330	16	35	44	100
12	XA32/16-02202	Y2-90L-2	2.2	80	352	4	345	192	352	789	80	560	750	25	60	294	330	16	35	26	81
13	XA32/16-01502	Y2-90S-2	1.5	80	352	4	320	192	352	764	80	560	750	25	60	294	330	16	35	21	77
14	XA32/16-01504	Y2-90L-4	1.5	80	352	4	345	192	352	789	80	560	750	25	60	294	330	16	35	27	82
15	XA32/16-01104	Y2-90S-4	1.1	80	352	4	320	192	352	764	80	560	750	25	60	294	330	16	35	22	78
16	XA32/16-00754	Y2-802-4	0.75	80	352	4	295	192	332	739	80	560	750	25	60	294	330	16	35	17	73
17	XA32/16-00554	Y2-801-4	0.55	80	352	4	295	192	332	739	80	560	750	25	60	294	330	16	35	16	72
18	XA32/20-15002	Y2-160M2-2	15	80	413	4	605	233	473	1049	70	780	1000	12.5	73	387	420	18	47	109	195
19	XA32/20-11002	Y2-160M1-2	11	80	413	4	605	233	473	1049	70	780	1000	12.5	73	387	420	18	47	108	194
20	XA32/20-07502	Y2-132S2-2	7.5	80	413	4	470	233	446	914	70	630	800	12.5	73	317	350	18	47	69	148
21	XA32/20-05502	Y2-132S1-2	5.5	80	413	4	470	233	446	914	70	630	800	12.5	73	317	350	18	47	65	144
22	XA32/20-04002	Y2-112M-2	4	80	400	4	400	220	408	844	80	560	750	12.5	60	294	330	16	47	43	112
23	XA32/20-02204	Y2-100L1-4	2.2	80	400	4	385	220	390	829	80	560	750	12.5	60	294	330	16	47	34	103
24	XA32/20-01504	Y2-90L-4	1.5	80	400	4	345	220	380	789	80	560	750	12.5	60	294	330	16	47	27	95
25	XA32/20-01104	Y2-90S-4	1.1	80	400	4	320	220	380	764	80	560	750	12.5	60	294	330	16	47	22	91
26	XA32/20-00754	Y2-802-4	0.75	80	400	4	295	220	360	739	80	560	750	12.5	60	294	330	16	47	17	86
27	XA32/20-00554	Y2-801-4	0.55	80	400	4	295	220	360	739	80	560	750	12.5	60	294	330	16	47	16	85
28	XA32/26-30002	Y2-200L1-2	30	100	515	4	765	290	590	1229	85	750	1100	32.5	90	417	460	18	58	224	340
29	XA32/26-22002	Y2-180M-2	22	100	478	4	690	253	513	1154	70	780	1000	32.5	73	387	420	18	58	155	259
30	XA32/26-18502	Y2-160L-2	18.5	100	478	4	660	253	493	1124	70	780	1000	32.5	73	387	420	18	58	133	229
31	XA32/26-15002	Y2-160M2-2	15	100	478	4	605	253	493	1069	70	780	1000	32.5	73	387	420	18	58	109	206



XA
series

Installation Dimension

XA 安装尺寸表 (50HZ)

序号	XA型号		电机Motor (B3)		水泵安装尺寸 (mm)															重量Weight(kg)		
	Model	型号Model	功率kw		a	H	C	L4	H1	H2	L	L1	L2	L3	s	w	B1	B	φd	单泵	电机	机组总重
404	XA250/32-132004	Y2-315M-4	132		220	990	6	1320	470	985	2237	110	1300	1850	90	115	657	700	18	366	979	1491
405	XA250/32-110004	Y2-315S-4	110		220	990	6	1275	470	980	2192	110	1300	1850	90	115	657	700	18	366	836	1348
406	XA250/32-90004	Y2-280M-4	90		220	990	6	1030	470	850	1947	130	1250	1650	90	115	657	700	18	366	587	1089
407	XA250/32-75004	Y2-280S-4	75		220	990	6	980	470	850	1897	130	1250	1650	90	115	657	700	18	366	544	1046
408	XA250/32-55004	Y2-250M-4	55		220	985	6	910	465	830	1827	130	1200	1650	90	110	657	700	18	366	383	871
409	XA250/32-45004	Y2-225M-4	45		220	985	6	835	465	790	1752	130	1170	1500	90	110	657	700	18	366	312	795
410	XA250/32-37004	Y2-225S-4	37		220	985	6	810	465	795	1727	130	1170	1500	90	110	657	700	18	366	301	783
411	XA250/40-250004	Y2-355M-4	250		220	1115	6	1540	555	1210	2448	130	1370	2000	90	155	800	850	18	396	1612	2251
412	XA250/40-200004	Y2-315L2-4	200		220	1075	6	1320	515	1030	2228	130	1350	1850	90	115	657	700	18	396	1102	1649
413	XA250/40-160004	Y2-315L1-4	160		220	1075	6	1320	515	1030	2228	130	1350	1850	90	115	657	700	18	396	1020	1567
414	XA250/40-132004	Y2-315M-4	132		220	1075	6	1320	515	1030	2228	110	1300	1850	90	115	657	700	18	396	979	1524
415	XA250/40-110004	Y2-315S-4	110		220	1075	6	1275	515	1025	2183	110	1300	1850	90	115	657	700	18	396	836	1381
416	XA250/40-90004	Y2-280M-4	90		220	1075	6	1030	515	895	1938	130	1250	1650	90	115	657	700	18	396	587	1121
417	XA250/40-75004	Y2-280S-4	75		220	1075	6	980	515	895	1888	130	1250	1650	90	115	657	700	18	396	544	1078
418	XA250/50-315004	Y2-355L-4	315		250	1275	6	1540	605	1260	2516	110	1450	2100	95	155	800	850	18	550	1765	2561
419	XA250/50-250004	Y2-355M-4	250		250	1275	6	1540	605	1260	2516	110	1510	2000	95	155	800	850	18	550	1612	2406
420	XA250/50-200004	Y2-315L2-4	200		250	1235	6	1320	565	1080	2296	130	1400	1850	125	115	807	850	18	550	1102	1811
421	XA250/50-160004	Y2-315L1-4	160		250	1235	6	1320	565	1080	2296	130	1400	1850	125	115	807	850	18	550	1020	1730
422	XA250/50-132004	Y2-315M-4	132		250	1235	6	1320	565	1080	2296	130	1400	1850	125	115	807	850	18	550	979	1686
423	XA300/40-200004	Y2-315L2-4	200		300	965	6	1320	540	1055	2346	130	1400	1850	170	115	807	850	18	550	1102	1810
424	XA300/40-160004	Y2-315L1-4	160		300	965	6	1320	540	1055	2346	130	1400	1850	172	115	807	850	18	550	1020	1728
425	XA300/40-132004	Y2-315M-4	132		300	965	6	1320	540	1055	2346	130	1400	1850	170	115	807	850	18	550	979	1685
426	XA300/40-110004	Y2-315S-4	110		300	965	6	1275	540	1050	2301	130	1400	1850	170	115	807	850	18	550	836	1542
427	XA300/40-90004	Y2-280M-4	90		300	965	6	1030	540	920	2056	130	1300	1750	170	115	807	850	18	550	587	1283